

T M 11-5805-343-24P-1

TECHNICAL MANUAL

**ORGANIZATIONAL, DIRECT SUPPORT, AND GENERAL SUPPORT MAINTENANCE
REPAIR PARTS AND SPECIAL TOOLS LISTS
(INCLUDING DEPOT MAINTENANCE REPAIR PARTS AND SPECIAL TOOLS)**

FOR

**TELEGRAPH-TELEPHONE SIGNAL
CONVERTER CV-1180A/G
(NSN 5805-00-402-2238)**

HEADQUARTERS, DEPARTMENT OF THE ARMY

TECHNICAL MANUAL
No. 11-5805-243-24P-1

HEADQUARTERS
DEPARTMENT OF THE ARMY
WASHINGTON, DC, 18 May 1977

**ORGANIZATIONAL, DIRECT SUPPORT, AND GENERAL SUPPORT MAINTENANCE
 REPAIR PARTS AND SPECIAL TOOLS LISTS
 (INCLUDING DEPOT MAINTENANCE REPAIR PARTS AND SPECIAL TOOLS)
 FOR
 TELEGRAPH-TELEPHONE SIGNAL CONVERTER CV-1180A/G
 (NSN 5805-00-402-2238)
 Current as of 24 February 1977**

REPORTING OF ERRORS

You can improve this manual by recommending improvements using DA Form 2028-2 (Test) located in the back of the manual. Simply tear out the self addressed form, fill it out as shown on the sample, fold it where shown, and drop it in the mail.

If there are no blank DA Form 2028-2 (Test) in the back of your manual, use the standard DA Form 2028 (Recommended Changes to Publications and Blank Forms) and forward to the Commander, US Army Electronics Command, ATTN: DRSEL-MA-Q, Fort Monmouth, New Jersey 07703. In either case a reply will be furnished direct to you.

Table of Contents

		Page	Illus. Figure
Section	I. INTRODUCTION	1	
	II. REPAIR PARTS LIST	5	
Group	00 Converter, Telegraph-TelephoneSignal CV-1180A/G	5	1
	01 Adapter, rack assembly (A11)	6	2
	02 Chassis, electrical equipment (A10)	9	3-6
	03 Power Supply Assembly (A9)	21	7
	04 Combiner Assembly (A4)	25	8
	05 Combiner Assembly (A6) (Same as group 04)		
	06 Ring receive assembly (A8)	29	9
	07 Ring send assembly (A7)	33	10
	08 Tone Converter assembly (A3)	37	11
	09 Tone converter assembly (A5) (Same as group 08)		
	10 Tone keyer assembly (A1)	41	12
	11 Tone keyer assembly (A2)	45	13
SECTION	III. SPECIAL TOOLS LIST (NOT APPLICABLE)		
	IV. NATIONAL STOCK NUMBER AND PART NUMBER INDEX	47	

SECTION I
INTRODUCTION

1. **Scope**

This manual lists spares and repair parts; special tools; special test, measurement, and diagnostic equipment (TMDE), and other special support equipment required for performance of organizational, direct support, and general support maintenance of the CV-1180A/G. It authorizes the requisitioning and issue of spares and repair parts as indicated by the source and maintenance codes.

2. **General**

This Repair Parts and Special Tools List is divided into the following sections:

a. *Section II. Repair Parts List.* A list of spares and repair parts authorized for use in the performance of maintenance. The list also includes parts which must be removed for replacement of the authorized parts. Parts lists are composed of functional groups in numeric sequence, with the parts in each group listed in figure and item number sequence.

b. *Section III. Special Tools List.* Not applicable.

c. *Section IV. National Stock Number and Part Number Index.* A list, in National item identification number (NIIN) sequence, of all National stock numbers (NSN) appearing in the listings, followed by a list, in alphabetic sequence, of all part numbers appearing in the listings. National stock numbers and part numbers are cross-referenced to each illustration figure and item number appearance.

3. **Explanation of Columns**

a. *Illustration.* This column is divided as follows:
(1) *Figure number.* Indicates the figure number of the illustration on which the item is shown.
(2) *Item number.* The number used to identify item called out in the illustration.

b. *Source, Maintenance, and Recoverability (SMR) Codes.*

(1) *Source code.* Source codes indicate the manner of acquiring support items for maintenance, repair, or overhaul of end items. Source codes are entered in the first and second positions of the Uniform SMR Code format as follows:

Code	Definition
------	------------

PA	Item procured and stocked for anticipated or known usage.
----	---

XD	A support item that is not stocked. When required, item will be procured through normal supply channels.
----	--

NOTE

Cannibalization or salvage may be used as a source of supply for any items source coded above except those coded XA and aircraft support items as restricted by AR 700-42.

(2) *Maintenance code.* Maintenance codes are assigned to indicate the levels of maintenance authorized to USE and REPAIR support items. The maintenance codes are entered in the third and fourth positions of the Uniform SMR Code format as follows:

(a) The maintenance code entered in the third position will indicate the lowest maintenance level authorized to remove, replace, and use the support item. The maintenance code entered in the third position will indicate one of the following levels of maintenance:

Code	Application/Explanation
------	-------------------------

O	Support item is removed, replaced, used at the organizational level.
---	--

F	Support item is removed, replaced, used at the direct support level.
---	--

D	Support items that are removed, replaced, used at depot, mobile depot, specialized repair activity only.
---	--

(b) The maintenance code entered in the fourth position indicates whether the item is to be repaired and identifies the lowest maintenance level

with the capability to perform complete repair (i.e., all authorized maintenance functions). This position will contain one of the following maintenance codes:

Code	Application/Explanation
F	The lowest maintenance level capable of complete repair of the support item is the direct support level.
D	The lowest maintenance level capable of complete repair of the support item is the depot level.
Z	Nonreparable. No repair is authorized.

(3) **Recoverability code.** Recoverability codes are assigned to support items to indicate the disposition action on unserviceable items. The recoverability code is entered in the fifth position of the Uniform SMR Code format as follows:

Recoverability codes	Definition
Z	Nonreparable item. When unserviceable, condemn and dispose at the level indicated in position 3.
F	Reparable item. When uneconomically reparable, condemn and dispose at the direct support level.
D	Reparable item. When beyond lower level repair capability, return to depot. Condemnation and disposal not authorized below depot level.
L	Reparable item. Repair, condemnation, and disposal not authorized below depot/specialized repair activity level.

c. **National Stock Number.** Indicates the National stock number assigned to the item and will be used for requisitioning purposes.

d. **Part Number.** Indicates the primary number used by the manufacturer (individual, company, firm, corporation, or Government activity), which controls the design and characteristics of the item by means of its engineering drawings, specifications, standards, and inspection requirements to identify an item or range of items.

NOTE

When a stock numbered item is requisitioned, the repair part received may have a different part number than the part being replaced.

e. **Federal Supply Code for Manufacturer (FSCM).**

The FSCM is a 5-digit numeric code listed in SB 708-42 which is used to identify the manufacturer, distributor, or Government agency, etc.

f. **Description.** Indicates the Federal item name and, if required, a minimum description to identify the item.

g. **Unit of Measure (U/M).** Indicates the standard of the basic quantity of the listed item as used in performing the actual maintenance function. This measure is expressed by a two-character alphabetical abbreviation (e.g., ea, in, pr, etc). When the unit of measure differs from the unit of issue, the lowest unit of issue that will satisfy the required units of measure will be requisitioned.

h. **Quantity Incorporated in Unit.** Indicates the quantity of the item used in the breakout shown on the illustration figure, which is prepared for a functional group, subfunctional group, or an assembly.

4. Special Information

The following publication pertains to the CV-1180A/G and its components:

TM 11-5805-343-14-1, Telegraph-Telephone Signal Converter CV-1180A/G

5. How to Locate Repair Parts

a. When National stock number or part number is unknown.

(1) **First.** Using the table of contents, determine the functional group within which the item belongs. This is necessary since illustrations are prepared for functional groups and listings are divided into the same groups.

(2) **Second.** Find the illustration covering the functional group to which the item belongs.

(3) **Third.** Identify the item on the illustration and note the illustration figure and item number of the item.

(4) **Fourth.** Using the Repair Parts Listing, find the figure and item number noted on the illustration.

b. When National stock number or part number is known.

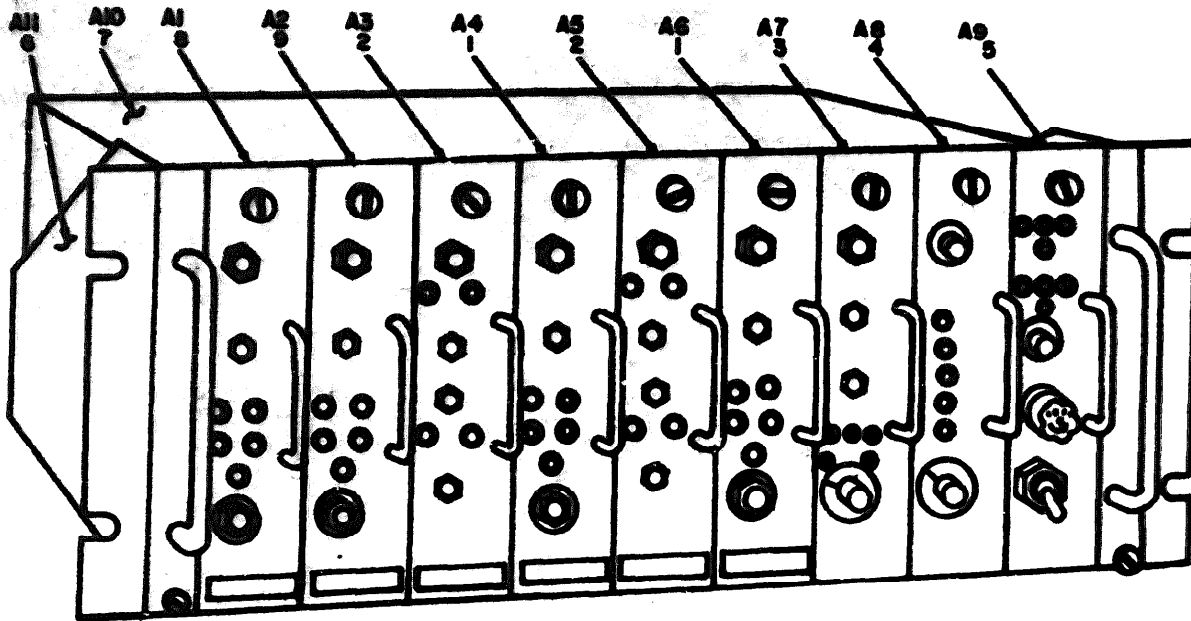
(1) **First.** Using the Index of National Stock Numbers and Part Numbers, find the pertinent National stock number or part number. This index is in NIIN sequence followed by a list of part numbers in alphameric sequence, cross-referenced to the illustration figure number and item number.

(2) **second** After finding the figure and item number, locate the figure and item number in the repair parts list.

6. Abbreviations

Not applicable.

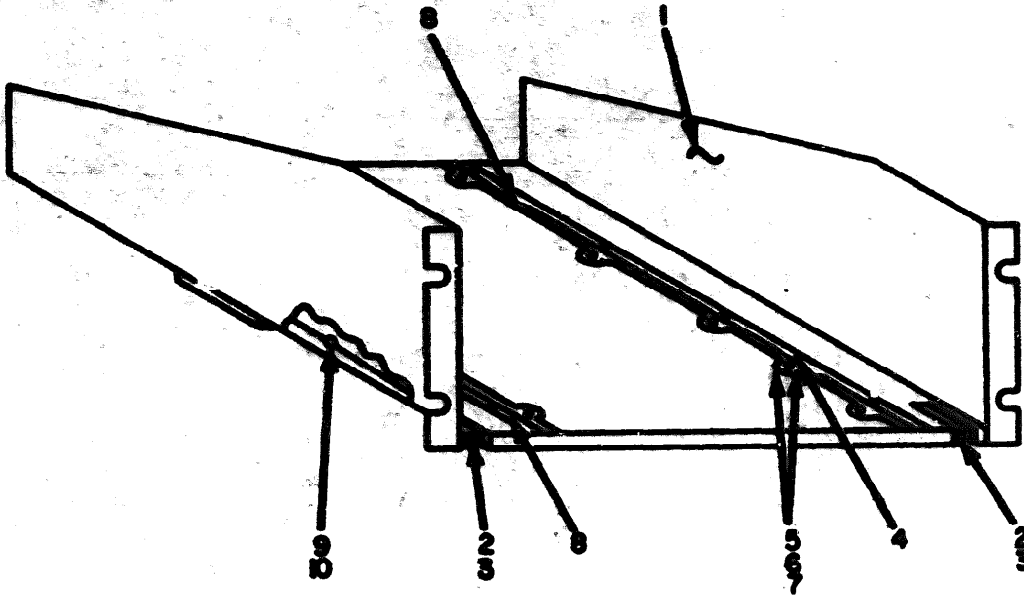
(Next printed page is 5)



EL 2K000

Figure 1. Converter, Telegraph-Telephone Signal CV-1180A/G

ST		QUANTITY	NATIONAL STOCK NUMBER	PART NUMBER	FORM	DESCRIPTION	UNIT	QTY INC IN UNIT
NO	NO							
GROUP 00 CONVERTER, TELEGRAPH-TELEPHONE SIGNAL CV-1180A/G								
1	1	PAFID	5000-00-421-0300	31004210	24361	CONDIMER ASSEMBLY (A4),(A5)	EA	2
1	2	PAFID	5000-00-421-0300	31004212	24361	TONE CONVERTER ASSEMBLY (A3),(A6)	EA	2
1	2	PAFID	5000-00-421-0300	31004209	24361	RING SEND ASSEMBLY (A7)	EA	1
1	4	PAFID	5000-00-427-1570	31004211	24361	RING RECEIVE ASSEMBLY (A8)	EA	1
1	5	PAFID	5000-00-421-0240	31004200	24361	POWER SUPPLY ASSEMBLY (A9)	EA	1
1	4	ADPPP		31004200	24361	ADAPTER, RACK ASSEMBLY (A11)	EA	2
1	1	ADPPP		41004202	24361	CHASSIS, ELECTRICAL EQUIPMENT (A10)	EA	1
1	6	ENFID	5000-00-421-0230	31004207-1	24361	TONE KEYS ASSEMBLY (A1)	EA	1
1	6	ENFID	5000-00-421-0230	31004207-2	24361	TONE KEYS ASSEMBLY (A2)	EA	1

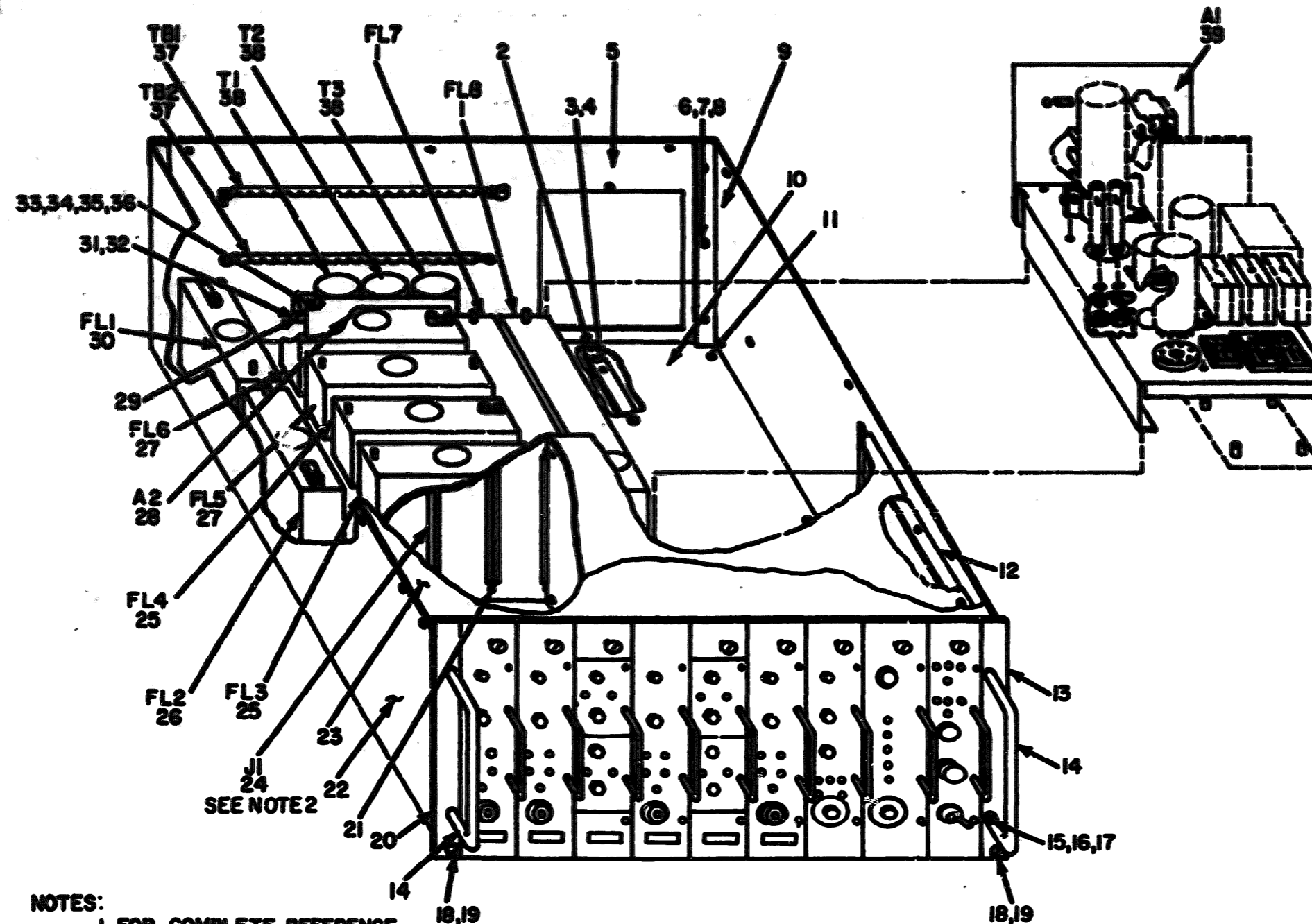


NOTE: FOR COMPLETE REFERENCE DESIGNATION
PREFIX WITH AII.

EL2KD002

Figure 2. Adapter, Rack Assembly (All)

(1) ILLUSTRATION		(2) QTY	(3) NATIONAL STOCK NUMBER	(4) PART NUMBER	(5) FCOM	(6) DESCRIPTION	(7) USABLE ON CODE	(8) QTY REQ IN UNIT
FIG NO.	ITEM NO.							
GROUP 01 ADAPTER, RACK ASSEMBLY (ALL)								
2	1	NP22	6848-00-043-1770	21623105	24841	ADAPTER, RACK		EA 1
2	2	NP22		21623107	24841	BRACKET, ANGLE		EA 2
2	3	NP22	5330-00-027-7247	72962	72962	NUT, PLAIN, CLINCH		EA 2
2	4	NP22	5220-00-477-0420	979-908	00073	REVET, SOLID		EA 10
2	5	NP22	5330-00-094-0491	NS1957-07	90900	SCREEN, MACHINE		EA 19
2	6	NP22	5330-00-722-0900	NS1970-008	90900	WASHER, FLAT		EA 14
2	7	NP22	5330-00-717-0901	NS3000-104	90900	WASHER, LOCK		EA 14
2	8	NP22	5340-00-100-7244	21623109	24841	GUIDE, RAIL		EA 2
2	9	NP22	5330-00-094-0492	NS1957-08	90900	SCREEN, MACHINE		EA 4
2	10	NP22	5330-00-043-0900	NS3000-004	90900	NUT, PLAIN, HEXAGON		EA 4

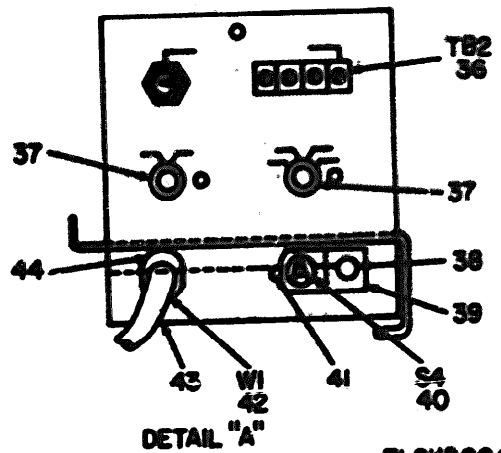
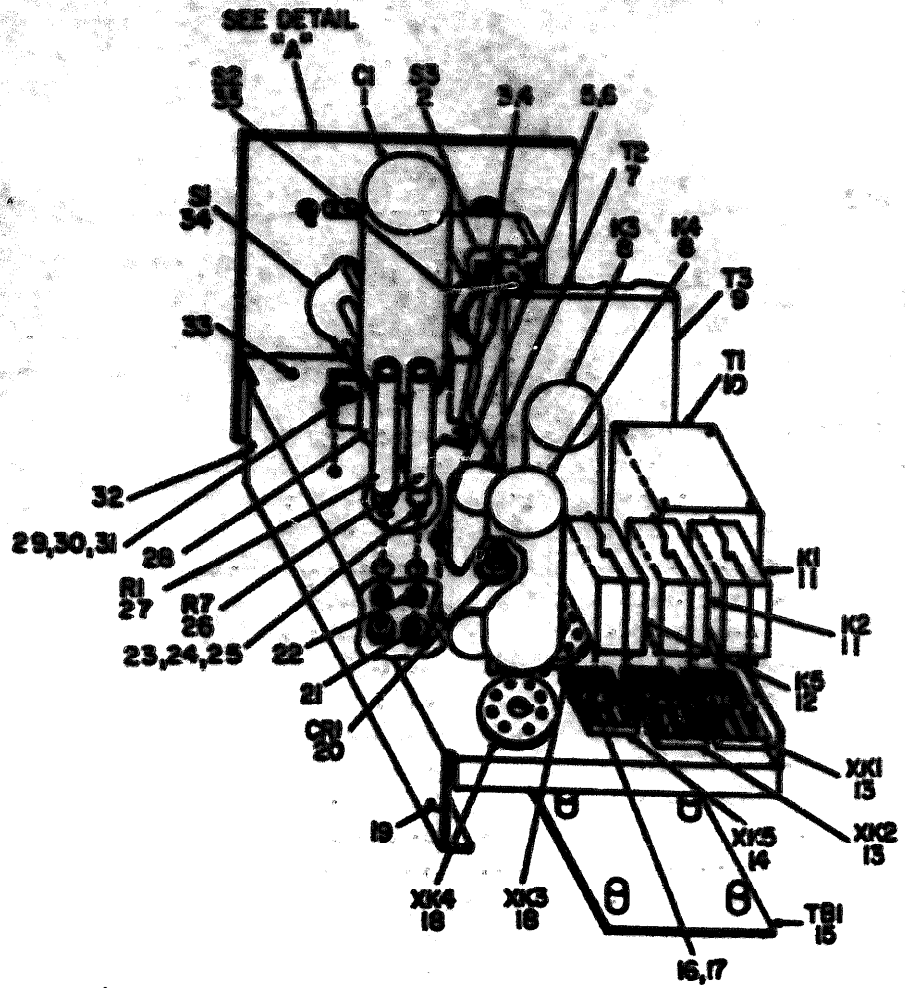


NOTES:
 1. FOR COMPLETE REFERENCE DESIGNATION PREFIX WITH A10.
 2. J1 THRU J9 FROM LEFT TO RIGHT.

EL2KD003.

Figure 3. Chassis, Electrical Equipment (A10)

QUANTITY		UNIT	NATIONAL STOCK NUMBER	PART NUMBER	FORM	DESCRIPTION	USABLE OR CODE	REQ	QTY REQ IN UNIT
REQ	UNIT								
GROUP 02 CHASSIS, ELECTRICAL EQUIPMENT									
(A100)									
2	1	PAF22	5905-00-430-4344	11020402	24341	FILTER, SAND PASS		EA	2
2	2	PAF22	5905-00-340-1461	21020100	24341	COVER, RAIL		EA	2
2	2	PAF22	5305-00-477-0400	979-000	00073	SCREW, SELF		EA	10
2	4	PAF22	5305-00-054-4431	NS11937-07	94900	SCREW, MACHINE		EA	12
2	2	PAF22	5905-00-270-1907	11020100-2	94900	CHASSIS, ELECTRICAL EQUIPMENT		EA	2
2	4	PAF22	5310-00-054-0761	NS33049-204	94900	NUT, FLAIN, HEXAGON		EA	40
2	7	PAF22	5310-00-753-9900	NS15795-000	94900	WASHER, FLAT		EA	70
2	8	PAF22	5310-00-020-4300	NS33030-130	94900	WASHER, LOCK		EA	92
2	6	PAF22		21020100-1	24341	CHASSIS, ELECTRICAL EQUIPMENT		EA	3
2	10	PAF22		41020100	24341	CHASSIS, ELECTRICAL EQUIPMENT		EA	1
2	11	PAF22		CL5403-0	44004	NUT, FLAIN, CL INCH		EA	21
2	12	PAF22	5905-00-140-4400	21020127	24341	COVER, RAIL		EA	2
2	13	PAF22		21020112-1	24341	PANEL, FRONT		EA	1
2	14	PAF22		SET	00730	NUTS, GEN		EA	2
2	15	PAF22		NS11937-000	94900	SCREW, MACHINE		EA	4
2	16	PAF22	5305-00-054-2440	NS11930-04	94900	SCREW, MACHINE		EA	4
2	17	PAF22	5310-00-030-0120	NS33030-130	94900	WASHER, LOCK		EA	4
2	17	PAF22		6271C306002	00040	NUT, FLAIN, CL INCH		EA	2
2	19	PAF22	5305-00-440-0004	6130000002	00040	SCREW, EXTERNALLY RELIEVED BODY		EA	2
2	20	PAF22		21020112-2	24341	PANEL, FRONT		EA	1
2	21	PAF22	5305-00-054-4404	NS11937-10	94900	SCREW, MACHINE		EA	22
2	22	PAF22	5905-00-270-3914	31624104	24341	CHASSIS, ELECTRICAL EQUIPMENT		EA	1
2	24	PAF22		41020100	24341	COVER, TOP		EA	1
2	24	PAF22	5905-00-052-7174	143-022-03	03040	CONNECTOR, RECEPTACLE, ELECTRICAL		EA	9
2	25	PAF22	5915-00-470-3040	11020400-2	14341	FILTER, SAND PASS		EA	2
2	26	PAF22	5915-00-470-1200	11020400-7	24341	FILTER, SAND PASS		EA	1
2	27	PAF22	5915-00-473-3347	11020400-1	24341	FILTER, SAND PASS		EA	2
2	28	PAF22	5305-00-421-6164	21021070	24341	CIRCUIT CARD ASSEMBLY		EA	1
2	29	PAF22	5905-00-190-0000	21023121	24341	BRACKET, ANGLE		EA	1
2	30	PAF22	5915-00-473-3332	11020400-1	24341	FILTER, SAND PASS		EA	1
2	31	PAF22	5305-00-054-4652	NS11937-20	94900	SCREW, MACHINE		EA	77
2	32	PAF22	5310-00-027-7247	79NEP M12-02	72940	NUT, FLAIN, CL INCH		EA	20
2	33	PAF22	5310-00-934-9740	NS33049-244	94900	NUT, FLAIN, HEXAGON		EA	6
2	34	PAF22	5305-00-054-5649	NS11937-13	94900	SCREW, MACHINE		EA	6
2	35	PAF22	5320-00-395-4211	NS15795-000	94900	WASHER, FLAT		EA	4
2	36	PAF22	5310-00-903-6110	NS33030-130	94900	WASHER, LOCK		EA	3
2	37	PAF22	5940-00-431-6332	590-2004-20	79300	TERMINAL BOARD		EA	2
2	38	PAF22	5905-00-501-0000	NS	00220	TRANSFORMER, AUDIO FREQUENCY		EA	3
2	39	PAF22	5805-00-437-1597	41020204	24361	CHASSIS, ELECTRICAL EQUIPMENT		EA	1



EL2KD004

NOTE: FOR COMPLETE REFERENCE DESIGNATION
PREFIX WITH A10A1

Figure 4. Chassis, Electrical Equipment (A10), Subassembly A10A1

SECTION II

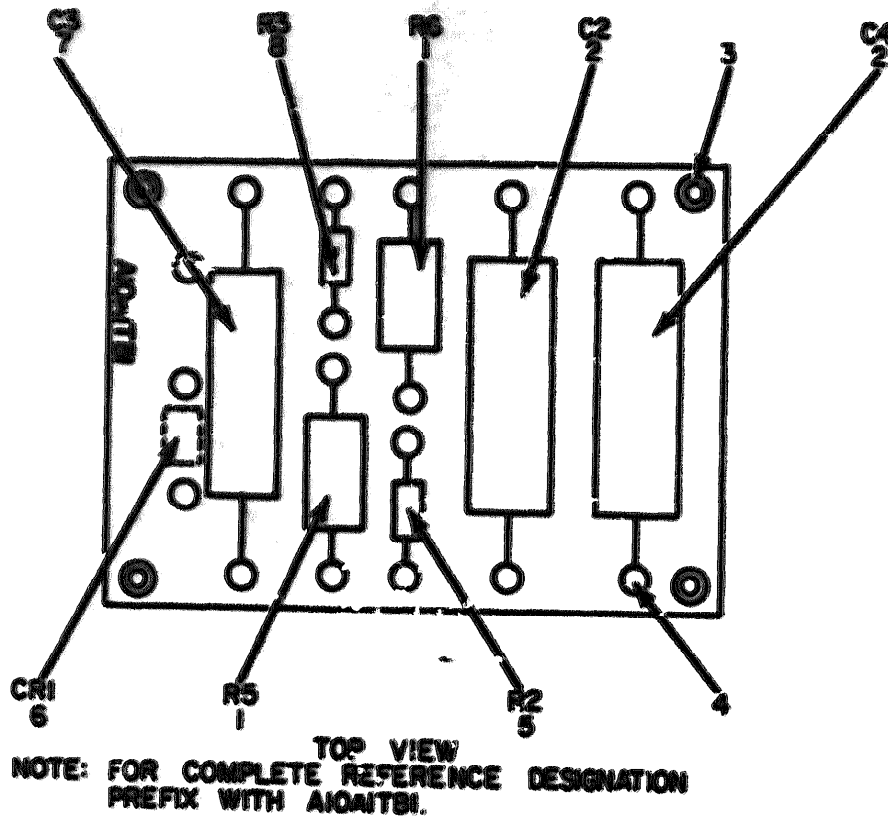
TM 11-5805-343-24P-1

QTY	UNIT	PART NUMBER	DESCRIPTION	UNLESS OTHERWISE SPECIFIED	QTY	UNIT
4	1	94P22 5910-00-170-7444	240220FRAC2A	94200	EA	1
4	2	94P22 5910-00-170-1210	KS25100-23	90000	EA	1
4	3	94P22 5910-00-050-4434	KS1937-09	90000	EA	1
4	4	94P22 5910-00-723-0910	KS1970-005	90000	EA	15
4	5	94P22 5910-00-050-0740	KS2040-044	90000	EA	2
4	6	94P22 5910-00-050-0211	KS1970-000	90000	EA	6
4	7	94P22 5910-00-051-0001	00	00223	EA	1
4	8	94P22 5910-00-042-7300	7300210070CP	70277	EA	2
4	9	94P22 5910-00-170-0010	11000400	24041	EA	1
4	10	94P22 5910-00-171-1013	447	00223	EA	1
4	11	94P22 5910-00-020-0000	7300000	70000	EA	2
4	12	94P22	7019400	70000	EA	1
4	13	94P22 5910-00-070-0010	24020-0	70000	EA	2
4	14	94P22 5910-00-020-0000	24020-1	70000	EA	1
4	15	94P22 5910-00-101-0010	KS20200	24041	EA	1
4	16	94P22 5910-00-107-1074	KS2000	00044	EA	1
4	17	94P22 5910-00-020-0110	KS2000-100	90000	EA	9
4	18	94P22 5910-00-100-0007	7010100	00240	EA	2
4	19	94P22	21002100	24041	EA	1
4	20	94P22 5910-00-040-0007	0000000	00040	EA	1
4	21	94P22 5910-00-050-0730	KS2040-004	90000	EA	2
4	22	94P22 5910-00-020-0110	KS2000-107	90000	EA	2
4	23	94P22 5910-00-050-0001	KS1937-04	90000	EA	2
4	24	94P22 5910-00-050-0970	KS1970-007	90000	EA	2
4	25	94P22 5910-00-020-0000	KS1970-041	90000	EA	4
4	26	94P22 5910-00-020-1007	1710	44000	EA	1
4	27	94P22 5910-00-100-1000	1710	44000	EA	1
4	28	94P22 5910-00-100-0701	14002400	24041	EA	1
4	29	94P22 5910-00-050-0740	KS2040-004	90000	EA	15
4	30	94P22 5910-00-050-4434	KS1937-09	90000	EA	2
4	31	94P22 5910-00-020-0000	KS2000-100	90000	EA	15
4	32	94P22 5910-00-020-7000	7000000-00	72002	EA	2
4	33	94P22 5910-00-020-7047	7000000-02	72002	EA	9
4	34	94P22 5910-00-170-4420	200000K	70000	EA	1
4	35	94P22 5910-00-170-4420	200000F	70000	EA	1
4	36	94P22 5910-00-020-0210	200-0004-0	73002	EA	1
4	37	94P22 5910-00-070-0000	000000	90144	EA	2
4	38	94P22 5910-00-050-0000	KS1937-10	90000	EA	7
4	39	94P22 5920-00-413-2443	21002100	24041	EA	1
4	40	94P22 5910-00-050-1000	KS25100-23	90000	EA	1

T e x t

TM 11-5805-343-24P-1

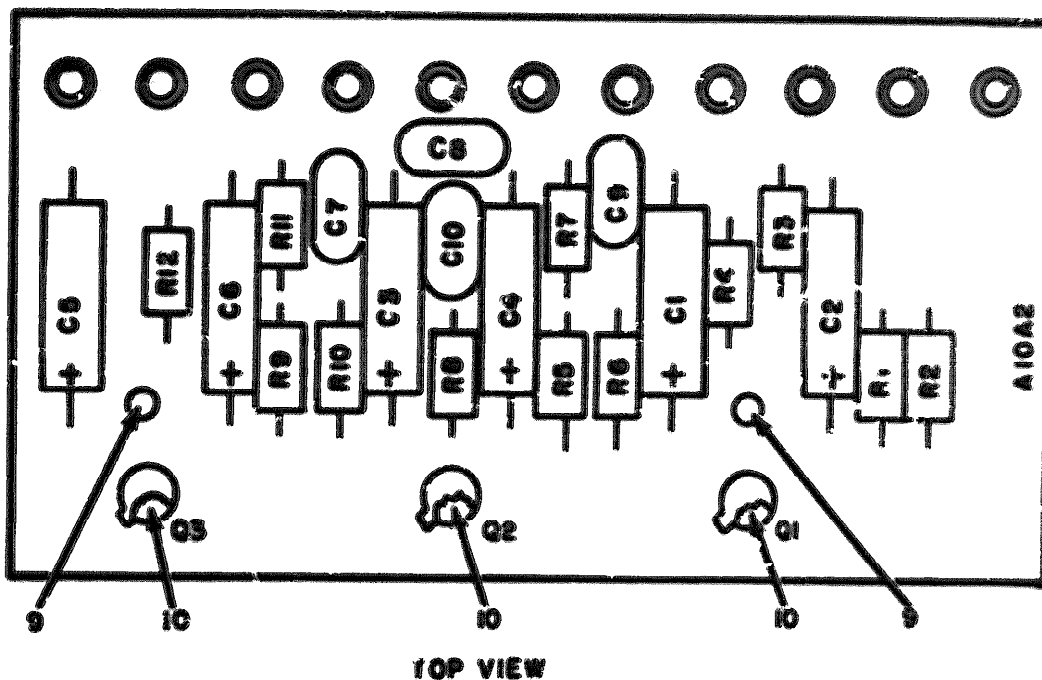
TO		QUANTITY	NATIONAL STOCK NUMBER	PART NUMBER	FROM	DESCRIPTION	ASSEMBLY CODE	UNIT	QTY REQ	UNIT
NO	NO									
4	41	90722	2905-00-034-6432	451197-00	00000	SCREW, MACHINE		EA	10	
4	42	90722	6150-00-009-0120	17400	70000	CORD, ELECTRICAL		EA	1	
4	43	90722		4100110	24301	CHASSIS, ELECTRICAL EQUIPMENT		EA	1	
4	44	90722	2075-00-370-0700	20471	20200	WIRE, STRAIN RELIEF, CABLE		EA	1	



EL210005

Figure 5. Chassis, Electrical Equipment (A10), Terminal Board Assembly A10A1TB1.

QTY		QTY	QTY	QTY	QTY	QTY	QTY	QTY	QTY
NO.	NO.								
9	1	PAPER	3925-02-076-0246	RESISTOR	93340	RESISTOR, FIXED, COMPOSITION	EA	2	
9	2	PAPER	3925-02-023-1445	RESISTOR	93340	CAPACITOR, FIXED, PAPER 300	EA	2	
9	3	PAPER	3925-02-723-2407	RESISTOR	93340	SPACER, SLINE	EA	4	
9	4	PAPER	3925-02-023-0203	RESISTOR	93340	TERMINAL, STUD	EA	17	
9	5	PAPER	3925-02-023-0203	RESISTOR	93340	RESISTOR, FIXED, COMPOSITION	EA	3	
9	6	PAPER	3925-02-043-2577	RESISTOR	93340	SEMICONDUCTOR DEVICE, DIODE	EA	3	
9	7	PAPER	3925-02-023-2637	RESISTOR	93340	CAPACITOR, FIXED, PAPER 300L	EA	3	
9	8	PAPER	3925-02-076-0246	RESISTOR	93340	RESISTOR, FIXED, COMPOSITION	EA	3	



REF. DES.	ITEM NO.	REF. DES.	ITEM NO.	REF. DES.	ITEM NO.	REF. DES.	ITEM NO.	REF. DES.	ITEM NO.
C1	1	C6	2	Q1	5	R3	6	R8	8
C2	2	C7	3	Q2	5	R4	6	R9	6
C3	1	C8	3	Q3	5	R5	6	R10	7
C4	2	C9	3	R1	6	R6	7	R11	6
C5	1	C10	4	R2	7	R7	6	R12	8

**NOTE: FOR COMPLETE REFERENCE DESIGNATION
PREFIX WITH A10A2.**

Figure 6. Chassis, Electrical Equipment (A10), Circuit Card Assembly
A10A2

EL2KD006

SECTION II

TM 11-5805-343-24P-1

QUANTITY	UNIT	NSN	NATIONAL STOCK NUMBER	PART NUMBER	FSC	DESCRIPTION	USABLE CN CODE	EA	QTY REQ IN UNIT
6	1	94FZZ	5810-00-041-7803	TE1157-1	94209	CAPACITOR, FIXED, ELECTROLYTIC		EA	3
6	2	94FZZ	5810-00-034-4000	TE1155	94209	CAPACITOR, FIXED, ELECTROLYTIC		EA	3
6	3	94FZZ		CHARL6PS61P9P	61340	CAPACITOR, FIXED, ELECTROLYTIC		EA	3
6	4	94FZZ		CHAR6C1R00	61340	CAPACITOR, FIXED, ELECTRICAL		EA	1
6	5	94FZZ	5961-00-004-3130	2N7600	61340	TRANSISTOR		EA	3
6	6	94FZZ	5905-00-106-7005	RC070100J5	61340	RESISTOR, FIXED, COMPOSITION		EA	6
6	7	94FZZ	5905-00-001-0000	RC070P601J	61340	RESISTOR, FIXED, COMPOSITION		EA	3
6	8	94FZZ	5905-00-001-6440	RC07GF102J	61340	RESISTOR, FIXED, COMPOSITION		EA	3
6	9	94FZZ	5340-00-020-0200	1247-9	71270	POST, ELECTRICAL-MECHANICAL EQUIPMENT		EA	2
6	10	94FZZ	5961-00-024-0001	10171	67047	ROUTING PAD, ELECTRICAL COMPONENT		EA	3

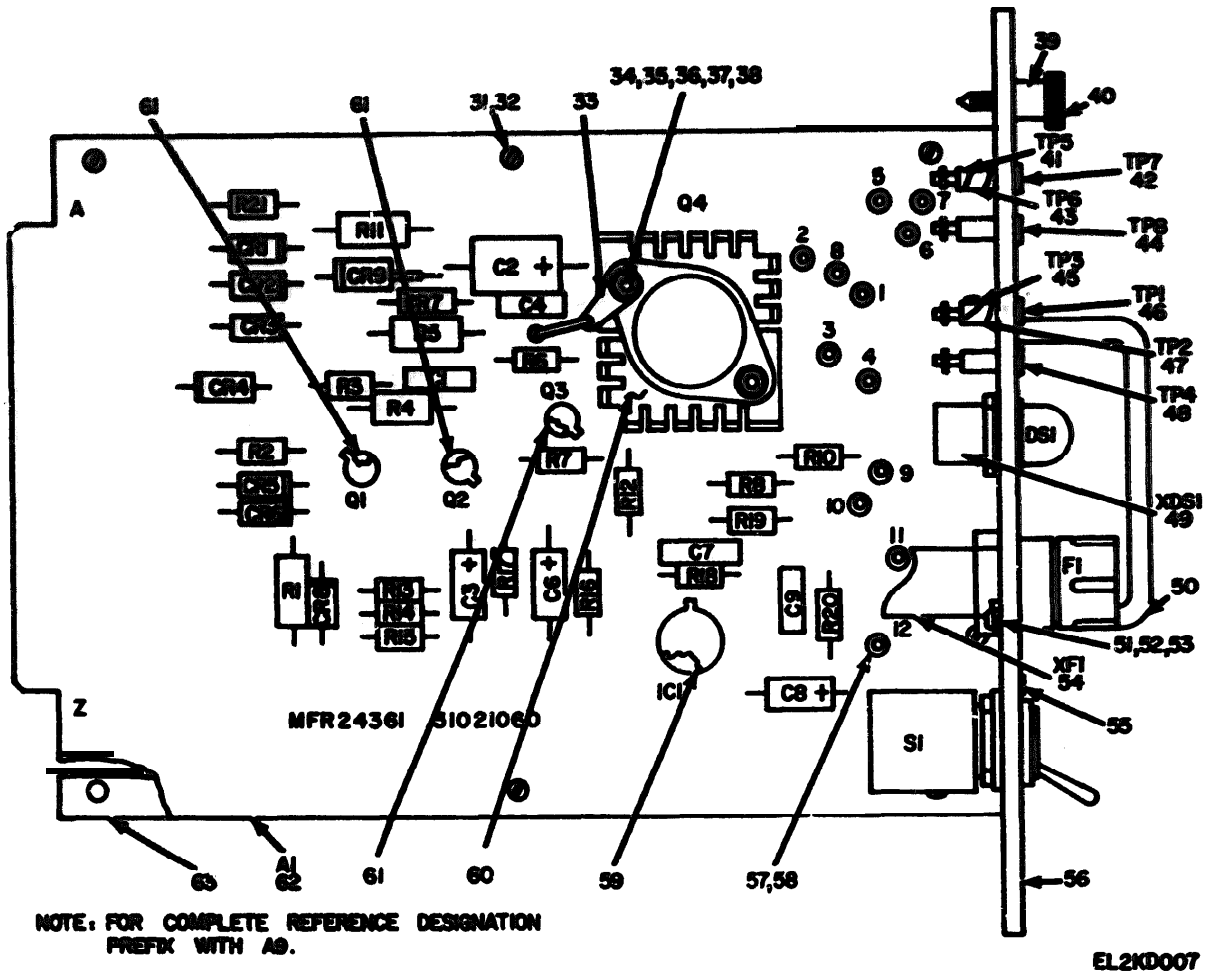


Figure 7. Power Supply Assembly (A9) (Sheet 1 of 2)

REF. DES.	ITEM NO.	REF. DES.	ITEM NO.	REF. DES.	ITEM NO.	REF. DES.	ITEM NO.	REF. DES.	ITEM NO.
C1	1	CR2	7	F1	12	R4	20	R14	28
C2	2	CR3	7	IC1	13	R5	21	R15	28
C3	3	CR4	7	Q1	14	R6	22	R16	29
C4	4	CR5	8	Q2	15	R7	23	R17	27
C5	3	CR6	8	Q3	15	R8	24	R18	23
C7	5	CR7	8	Q4	16	R10	25	R19	27
C8	3	CR8	9	R1	17	R11	26	R20	28
C9	6	CR9	10	R2	18	R12	27	R21	18
CR1	7	DS1	11	R3	19	R13	28	S1	30

EL2K0008

Figure 7. Power Supply Assembly (A9) (Sheet 2 of 2)

SECTION II

TM 11-5805-343-24P-1

CLASSIFICATION		SER CODE	NATIONAL STOCK NUMBER	PART NUMBER	FORM	DESCRIPTION	UNABLE CN CODE	QTY REQ IN CRT
GO PDB NO.	20 ITEM NO.							
GROUP 03 POWER SUPPLY ASSEMBLY (A0)								
7	1	PAGEZ	5910-00-030-3009	CK200	71500	CAPACITOR, FIXED, CERAMIC		EA 2
7	2	PAGEZ	5905-00-279-1077	7E1207	56200	CAPACITOR, FIXED, ELECTROLYTIC		EA 1
7	3	PAGEZ	5910-00-034-4000	TE1155	56200	CAPACITOR, FIXED, CERAMIC		EA 3
7	4	PAGEZ	5910-00-030-4000	611-0001300-1000	72002	CAPACITOR, FIXED, CERAMIC		EA 1
7	5	PAGEZ	5905-00-105-6510	CN040011J00	01340	CAPACITOR, FIXED, NECA		EA 1
7	6	PAGEZ	5905-00-105-6510	CN040020J00	01340	CAPACITOR, FIXED, NECA		EA 1
7	7	PAGEZ	5901-00-000-4700	1N4002	00131	SEMICONDUCTOR DEVICE, DIODE		EA 4
7	8	PAGEZ	5901-00-077-0004	1N645	01340	SEMICONDUCTOR DEVICE, DIODE		EA 3
7	9	PAGEZ	5901-00-002-3301	1N730A	00277	SEMICONDUCTOR DEVICE, DIODE		EA 1
7	10	PAGEZ	5961-00-057-0555	1N3022A	01340	SEMICONDUCTOR DEVICE, DIODE		EA 1
7	11	PAGEZ		RS25237-327T	90906	LAMP, INCANDESCENT		EA 1
7	12	PAGEZ		1A0312-5	79015	FUSE, CARTRIDGE		EA 1
7	13	PAGEZ	5962-00-442-2023	MC170906	04713	INTEGRATED CIRCUIT		EA 1
7	14	PAGEZ	5903-00-000-3000	JAN00132	03040	TRANSISTOR		EA 1
7	15	PAGEZ	5961-00-013-9360	2N1613	01340	TRANSISTOR		EA 2
7	16	PAGEZ	5901-00-100-6000	2K3055	01340	TRANSISTOR		EA 1
7	17	PAGEZ	5905-00-105-1246	RC0300102J	01340	RESISTOR, FIXED, COMPOSITION		EA 1
7	18	PAGEZ	5905-00-600-3309	RC07GF331J	01340	RESISTOR, FIXED, COMPOSITION		EA 2
7	19	PAGEZ	5905-00-682-4104	RC070F423J	01340	RESISTOR, FIXED, COMPOSITION		EA 1
7	20	PAGEZ	5905-00-076-6494	240E7300	96200	RESISTOR, FIXED, WIRE WOUND		EA 1
7	21	PAGEZ	5905-00-476-6228	995-2A3004	44600	RESISTOR, FIXED, WIRE WOUND		EA 1
7	22	PAGEZ	5905-00-686-3798	1C070F272J	01340	RESISTOR, FIXED, COMPOSITION		EA 1
7	23	PAGEZ	5905-00-603-7723	RC070F152J	01340	RESISTOR, FIXED, COMPOSITION		EA 2
7	24	PAGEZ	5835-00-454-4429	RS99C2700F	01340	RESISTOR, FIXED, FILM		EA 1
7	25	PAGEZ	5905-00-985-9756	RS99C2000F	01340	RESISTOR, FIXED, FILM		EA 1
7	26	PAGEZ	5905-00-252-5425	RC430F910J	01340	RESISTOR, FIXED, COMPOSITION		EA 1
7	27	PAGEZ	5905-00-031-6134	RC070F022J	01340	RESISTOR, FIXED, COMPOSITION		EA 3
7	28	PAGEZ	5905-00-682-4109	RC070F961J	01340	RESISTOR, FIXED, COMPOSITION		EA 4
7	29	PAGEZ	5905-00-620-9142	RC070F390J	01340	RESISTOR, FIXED, COMPOSITION		EA 1
7	30	PAFZZ	5030-00-642-9198	T1002	01640	SWITCH, TOGGLE		EA 1
7	31	PAFZZ	5305-00-202-0524	AN507C440-5	00044	SCREW, MACHINE		EA 8
7	32	WFFZZ		790TH40	72062	NUT, SELF-LOCKING, HEXAGON		EA 10
7	33	WFFZZ		10010414-1	24361	TERMINAL, LUG		EA 1
7	34	PAGEZ	5310-00-934-9740	RS95649-244	90906	NUT, PLAIN, HEXAGON		EA 2
7	35	WFFZZ		9222N115	00540	SPACER, SLEEVE		EA 2
7	36	PAGEZ	5310-00-193-7577	RS95333-36	90906	WASHER, LOCK		EA 2
7	37	PAGEZ	9970-00-470-3342	11030413-2	23090	WASHER, SHOULDERED		EA 2
7	38	PAGEZ	5305-00-054-5642	RS91957-0	90906	SCREW, MACHINE		EA 2
7	39	WFFZZ		0271C00632	00540	NUT, PLAIN, CLINCH		EA 1

SECTION II

TM 11-5805-434-24P-1

QUANTITY	UNIT	PART NUMBER	NATIONAL STOCK NUMBER	PART NAME	ITEM	DESCRIPTION	USABLE ON CODE	UAC	QTY REQ IN ASST
7	40	PAPZ	9325-00-443-0004	4129200002	04040	SCREW,EXTERNALLY RELIEVED BODY		EA	1
7	41	PAPZ	9325-00-443-0100	8270000001	04091	JACK,TIP		EA	1
7	42	PAPZ	9325-00-443-1100	8270000002	04092	JACK,TIP		EA	1
7	43	PAPZ	9325-00-443-2100	8270000003	04093	JACK,TIP		EA	1
7	44	PAPZ	9325-00-443-3100	8270000004	04094	JACK,TIP		EA	1
7	45	PAPZ	9325-00-443-4100	8270000005	04095	JACK,TIP		EA	1
7	46	PAPZ	9325-00-443-5100	8270000006	04096	JACK,TIP		EA	1
7	47	PAPZ	9325-00-443-6100	8270000007	04097	JACK,TIP		EA	1
7	48	PAPZ	9325-00-443-7100	8270000008	04098	JACK,TIP		EA	1
7	49	PAPZ	9325-00-443-8100	8270000009	04099	JACK,TIP		EA	1
7	40	HPZ		MS22250-40	04000	LAMPHOLDER		EA	1
7	50	HPZ		1201-2	71279	HANDLE,GEN		EA	1
7	51	PAPZ	9325-00-004-0040	MS22250-15	04000	SCREW,MACHINE		EA	2
7	52	PAPZ	9325-00-004-0211	MS19700-003	04000	WASHER,FLAT		EA	2
7	53	PAPZ	9325-00-004-0110	MS22250-125	04000	WASHER,LOCK		EA	2
7	54	PAPZ	9325-00-004-0140	PN0000	01340	FUSEHOLDER		EA	1
7	55	HPZ		MS20040-4	02044	SCREW,MACHINE		EA	2
7	56	HPZ		21020120	24041	PANEL,FRONT		EA	1
7	57	PAPZ	9325-00-001-0700	A1070	57771	EYELET,METALLIC		EA	20
7	58	HPZ		A2004-2	71279	TERMINAL,STUD		EA	12
7	59	PAPZ	9990-00-040-0002	10040	07047	HEATING PAD,ELECTRICAL COMPONENT		EA	1
7	60	PAPZ	9990-00-040-0004	07040	09970	HEAT SINK,ELECTRICAL COMPONENT		EA	1
7	61	PAPZ	9990-00-040-0101	10020	07047	HEATING PAD,ELECTRICAL COMPONENT		EA	3
7	62	PAPOL	9990-00-421-0101	91021000	24041	CIRCUIT CARD ASSEMBLY		EA	1
7	63	HPZ		21020110	24041	BRACKET,DOUBLE ANGLE		EA	1

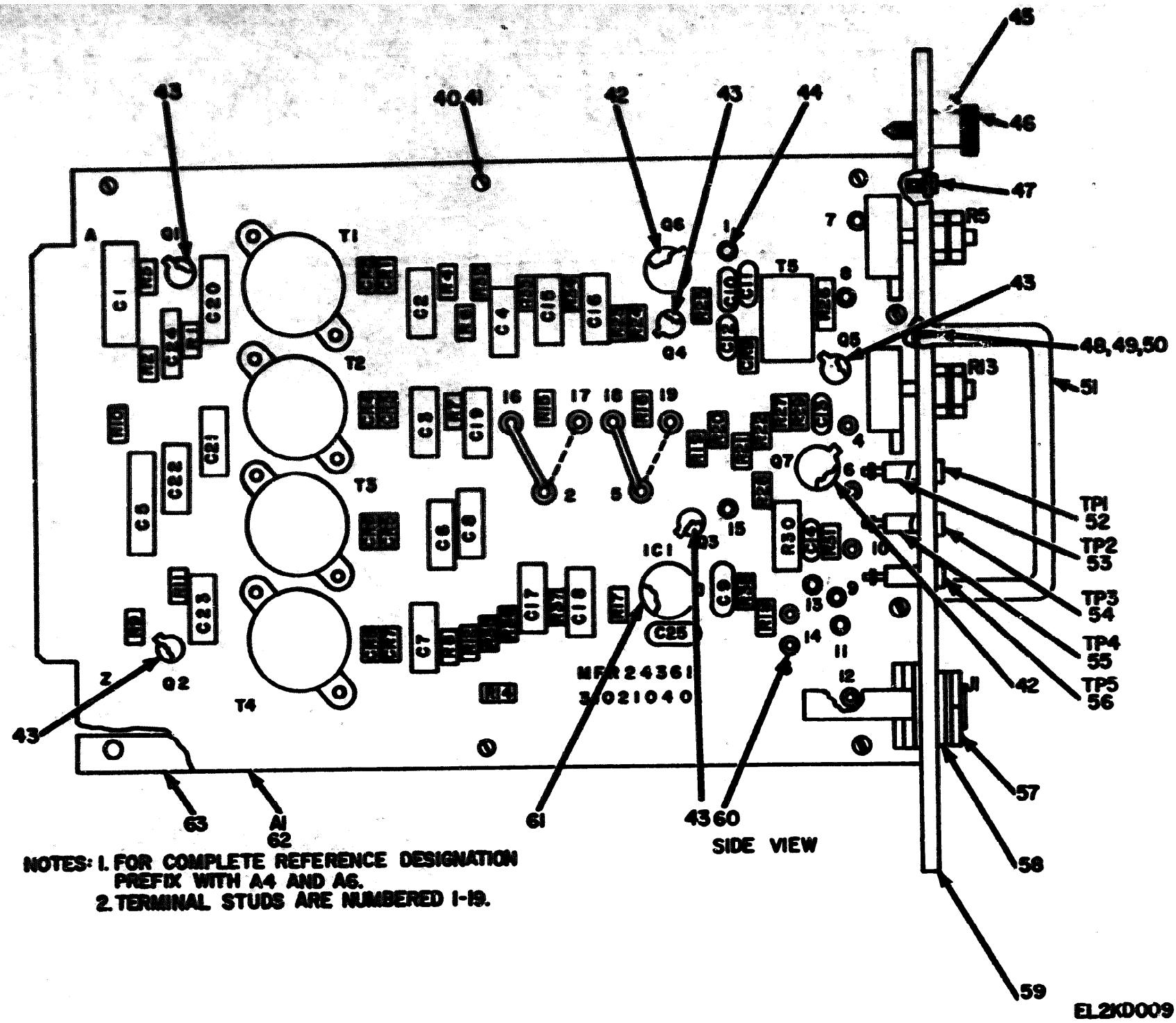


Figure 8. Combiner Assembly (A4) (Sheet 1 of 2)

REF. DES.	ITEM NO.	REF. DES.	ITEM NO.	REF. DES.	ITEM NO.	REF. DES.	ITEM NO.	REF. DES.	ITEM NO.
C1	1	C18	2	IC1	16	R9	21	R26	34
C2	2	C19	8	J1	17	R10	22	R27	35
C3	2	C20	9	G1	18	R11	23	R28	33
C4	3	C21	10	G2	18	R12	24	R29	36
C5	1	C22	11	G3	18	R13	25	R30	37
C6	2	C23	12	G4	18	R14	24	R31	36
C7	2	C24	13	G5	18	R15	27	R32	22
C8	3	C25	14	G6	19	R16	27	R33	22
C9	4	CR1	15	G7	20	R17	28	R34	22
C10	5	CR2	15	R1	21	R18	22	R35	22
C11	6	CR3	15	R2	22	R19	29	R36	22
C12	5	CR4	15	R3	23	R20	27	R37	22
C13	5	CR5	15	R4	24	R21	30	T1	38
C14	7	CR6	15	R5	25	R22	31	T2	38
C15	2	CR7	15	R6	24	R23	22	T3	38
C16	2	CR8	15	R7	26	R24	32	T4	38
C17	2	CR9	15	R8	26	R25	33	T5	39

EL2KDO10

Figure 8. Combiner Assembly (A4) (Sheet 2 of 2)

SECTION II

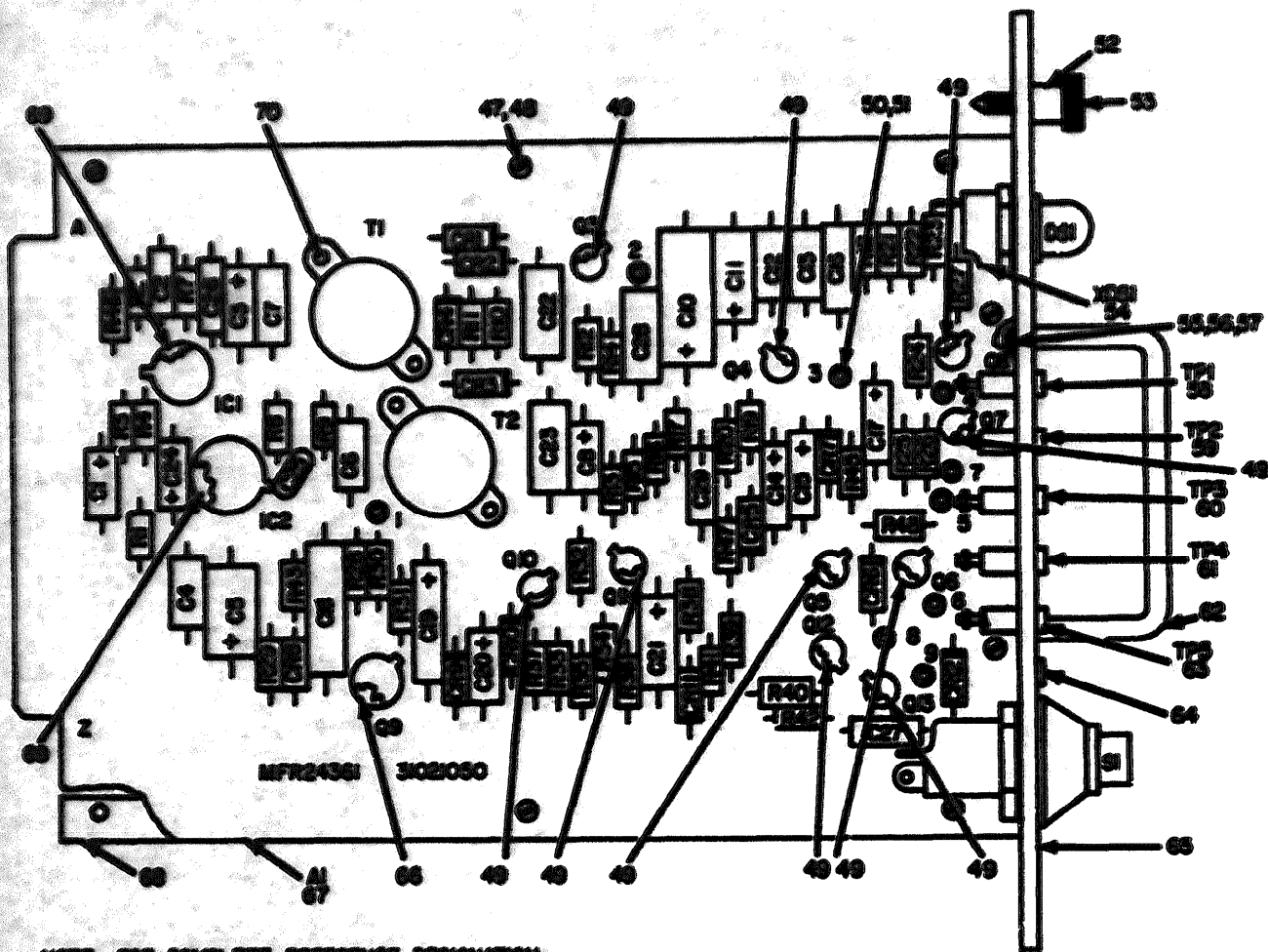
TM 11-5805-343-24P-1

(7) MANUFACTURER		(8) PART NUMBER	(9) NATIONAL STOCK NUMBER	(10) PART NUMBER	(11) PART NUMBER	(12) DESCRIPTION	(13) USABLE QTY CODE	(14) UNIT	(15) QTY REQD IN ASSEMBLY
GROUP 04 CONDENSER ASSEMBLY (A4)									
0	1	PA022	9910-00-005-2730	WNP151	14000	CAPACITOR, FIXED, PLASTIC 010L		EA	2
0	2	PA022	9910-00-005-2730	WNP154T	14000	CAPACITOR, FIXED, PLASTIC 010L		EA	0
0	3	PA022	9910-00-005-2730	WNP1522	14000	CAPACITOR, FIXED, PLASTIC 010L		EA	2
0	4	PA022	9910-00-717-0707	CR05047002	01340	CAPACITOR, FIXED, NICA 010L		EA	1
0	5	PA022	9910-00-702-0077	005-0000140-1002	72002	CAPACITOR, FIXED, CERAMIC 010L		EA	0
0	6	PA022	9910-00-231-1444	001-0000000-1000	72002	CAPACITOR, FIXED, CERAMIC 010L		EA	1
0	7	PA022	9910-00-200-1000	011-0000000-1000	72002	CAPACITOR, FIXED, CERAMIC 010L		EA	1
0	8	PA022	9910-00-034-1000	T01190	24000	CAPACITOR, FIXED, ELECTROLYTIC		EA	1
0	9	PA022		FACTORYSEL1	24000	CAPACITOR, FIXED, PLASTIC 010L		EA	1
0	10	PA022		FACTORYSEL2	24000	CAPACITOR, FIXED, PLASTIC 010L		EA	1
0	11	PA022		FACTORYSEL3	24000	CAPACITOR, FIXED, PLASTIC 010L		EA	1
0	12	PA022		FACTORYSEL4	24000	CAPACITOR, FIXED, PLASTIC 010L		EA	1
0	13	PA022	9910-00-400-4400	230	72002	CAPACITOR, FIXED, CERAMIC 010L		EA	1
0	14	PA022		CR06000000	01340	CAPACITOR, FIXED, NICA 010L		EA	1
0	15	PA022	9901-00-000-0000	10270	90100	SEMICONDUCTOR DEVICE, DIODE		EA	0
0	16	PA022	9900-00-440-0000	RC170100	04713	INTENSIFIED CONDUC		EA	1
0	17	PA022	9900-00-010-0700	J1000	01340	JACK, TELEPHONE		EA	1
0	18	PA022	9901-00-000-1000	2N7000	01340	TRANSISTOR		EA	5
0	19	PA022	9901-00-000-1070	2N3000	01340	TRANSISTOR		EA	1
0	20	PA022	9901-00-000-2070	2N3000	01340	TRANSISTOR		EA	1
0	21	PA022	9900-00-000-4100	RC070010J	01340	RESISTOR, FIXED, COMPOSITION		EA	2
0	22	PA022	9900-00-100-0000	RC070000J	01340	RESISTOR, FIXED, COMPOSITION		EA	10
0	23	PA022	9900-00-000-4100	RC070020J	01340	RESISTOR, FIXED, COMPOSITION		EA	2
0	24	PA022	9900-00-000-0000	RC070070J	01340	RESISTOR, FIXED, COMPOSITION		EA	4
0	25	PA022	9900-00-070-0000	RVSLAY000000	01340	RESISTOR, VARIABLE		EA	2
0	26	PA022	9900-00-000-0100	RC070050J	01340	RESISTOR, FIXED, COMPOSITION		EA	2
0	27	PA022	9900-00-000-2200	RC070047J	01340	RESISTOR, FIXED, COMPOSITION		EA	0
0	28	PA022	9900-00-000-0000	RC070000J	01340	RESISTOR, FIXED, COMPOSITION		EA	1
0	29	PA022	9900-00-000-0000	RC070010J	01340	RESISTOR, FIXED, COMPOSITION		EA	1
0	30	PA022	9900-00-000-0000	RC070010J	01340	RESISTOR, FIXED, COMPOSITION		EA	1
0	31	PA022	9900-00-000-0000	RC070010J	01340	RESISTOR, FIXED, COMPOSITION		EA	1
0	32	PA022	9900-00-100-0000	RC070000J	01340	RESISTOR, FIXED, COMPOSITION		EA	1
0	33	PA022	9900-00-000-7721	RC070010J	01340	RESISTOR, FIXED, COMPOSITION		EA	2
0	34	PA022	9900-00-700-0000	RC070020J	01340	RESISTOR, FIXED, COMPOSITION		EA	1
0	35	PA022	9900-00-110-0000	RC070000J	01340	RESISTOR, FIXED, COMPOSITION		EA	1
0	36	PA022	9900-00-000-0000	RC070010J	01340	RESISTOR, FIXED, COMPOSITION		EA	2
0	37	PA022	9900-00-070-0000	RC070010J	01340	RESISTOR, FIXED, COMPOSITION		EA	1
0	38	PA022	9900-00-070-0011	1100000	24001	TRANSFORMER, DISCRIMINATOR		EA	4
0	39	PA022	9900-00-000-0070	20PC	90000	TRANSFORMER, PULSE		EA	1

SECTION II

TM 11-5805-343-24P-1

DESCRIPTION		QTY	UNIT	NATIONAL STOCK NUMBER	PART NUMBER	QTY	DESCRIPTION	QTY	UNIT
QTY	UNIT								
0	00	0000	0000	0000	0000	0000	0000	0000	0000
0	01	0000	0000	0000	0000	0000	0000	0000	0000
0	02	0000	0000	0000	0000	0000	0000	0000	0000
0	03	0000	0000	0000	0000	0000	0000	0000	0000
0	04	0000	0000	0000	0000	0000	0000	0000	0000
0	05	0000	0000	0000	0000	0000	0000	0000	0000
0	06	0000	0000	0000	0000	0000	0000	0000	0000
0	07	0000	0000	0000	0000	0000	0000	0000	0000
0	08	0000	0000	0000	0000	0000	0000	0000	0000
0	09	0000	0000	0000	0000	0000	0000	0000	0000
0	10	0000	0000	0000	0000	0000	0000	0000	0000
0	11	0000	0000	0000	0000	0000	0000	0000	0000
0	12	0000	0000	0000	0000	0000	0000	0000	0000
0	13	0000	0000	0000	0000	0000	0000	0000	0000
0	14	0000	0000	0000	0000	0000	0000	0000	0000
0	15	0000	0000	0000	0000	0000	0000	0000	0000
0	16	0000	0000	0000	0000	0000	0000	0000	0000
0	17	0000	0000	0000	0000	0000	0000	0000	0000
0	18	0000	0000	0000	0000	0000	0000	0000	0000
0	19	0000	0000	0000	0000	0000	0000	0000	0000
0	20	0000	0000	0000	0000	0000	0000	0000	0000
0	21	0000	0000	0000	0000	0000	0000	0000	0000
0	22	0000	0000	0000	0000	0000	0000	0000	0000
0	23	0000	0000	0000	0000	0000	0000	0000	0000
0	24	0000	0000	0000	0000	0000	0000	0000	0000
0	25	0000	0000	0000	0000	0000	0000	0000	0000
0	26	0000	0000	0000	0000	0000	0000	0000	0000
0	27	0000	0000	0000	0000	0000	0000	0000	0000
0	28	0000	0000	0000	0000	0000	0000	0000	0000
0	29	0000	0000	0000	0000	0000	0000	0000	0000
0	30	0000	0000	0000	0000	0000	0000	0000	0000
0	31	0000	0000	0000	0000	0000	0000	0000	0000
0	32	0000	0000	0000	0000	0000	0000	0000	0000
0	33	0000	0000	0000	0000	0000	0000	0000	0000
0	34	0000	0000	0000	0000	0000	0000	0000	0000
0	35	0000	0000	0000	0000	0000	0000	0000	0000
0	36	0000	0000	0000	0000	0000	0000	0000	0000
0	37	0000	0000	0000	0000	0000	0000	0000	0000
0	38	0000	0000	0000	0000	0000	0000	0000	0000
0	39	0000	0000	0000	0000	0000	0000	0000	0000
0	40	0000	0000	0000	0000	0000	0000	0000	0000
0	41	0000	0000	0000	0000	0000	0000	0000	0000
0	42	0000	0000	0000	0000	0000	0000	0000	0000
0	43	0000	0000	0000	0000	0000	0000	0000	0000
0	44	0000	0000	0000	0000	0000	0000	0000	0000



NOTE: FOR COMPLETE REFERENCE DESIGNATION
PREFIX WITH: A8.

EL2KD011

Figure 9. Ring Receive Assembly (A8) (Sheet 1 of 2)

REF. DES.	ITEM NO.	REF. DES.	ITEM NO.	REF. DES.	ITEM NO.	REF. DES.	ITEM NO.	REF. DES.	ITEM NO.
C1	1	C22	10	IC2	16	RI1	25	R31	38
C2	2	C23	10	Q3	17	RI2	26	R32	39
C3	1	C24	1	Q4	17	RI3	25	R33	40
C4	1	C25	11	Q5	17	RI4	27	R34	41
C5	3	C26	12	Q6	17	RI5	28	R35	25
C6	4	C27	11	Q7	17	RI6	29	R36	25
C7	4	CR1	13	Q8	17	RI7	29	R37	40
C8	1	CR2	13	Q9	18	RI8	30	R38	33
C10	4	CR3	13	Q10	17	RI9	31	R39	27
C11	5	CR4	13	Q11	17	R20	30	R40	42
C12	4	CR5	13	Q12	17	R21	32	R41	43
C13	4	CR6	13	Q13	17	R22	33	R42	25
C14	6	CR7	13	R1	19	R23	34	R43	44
C15	6	CR8	13	R2	20	R24	34	R45	42
C16	7	CR9	13	R3	21	R25	35	S1	45
C17	6	CR10	13	R4	19	R26	25	T1	46
C18	8	CR11	13	R7	22	R27	36	T2	46
C19	9	CR12	13	R8	23	R28	26		
C20	1	DS1	14	R9	24	R29	33		
C21	9	IC1	15	R10	25	R30	37		

EL2K002

Figure 9. Ring Receive Assembly (A8) (Sheet 2 of 2)

SECTION II

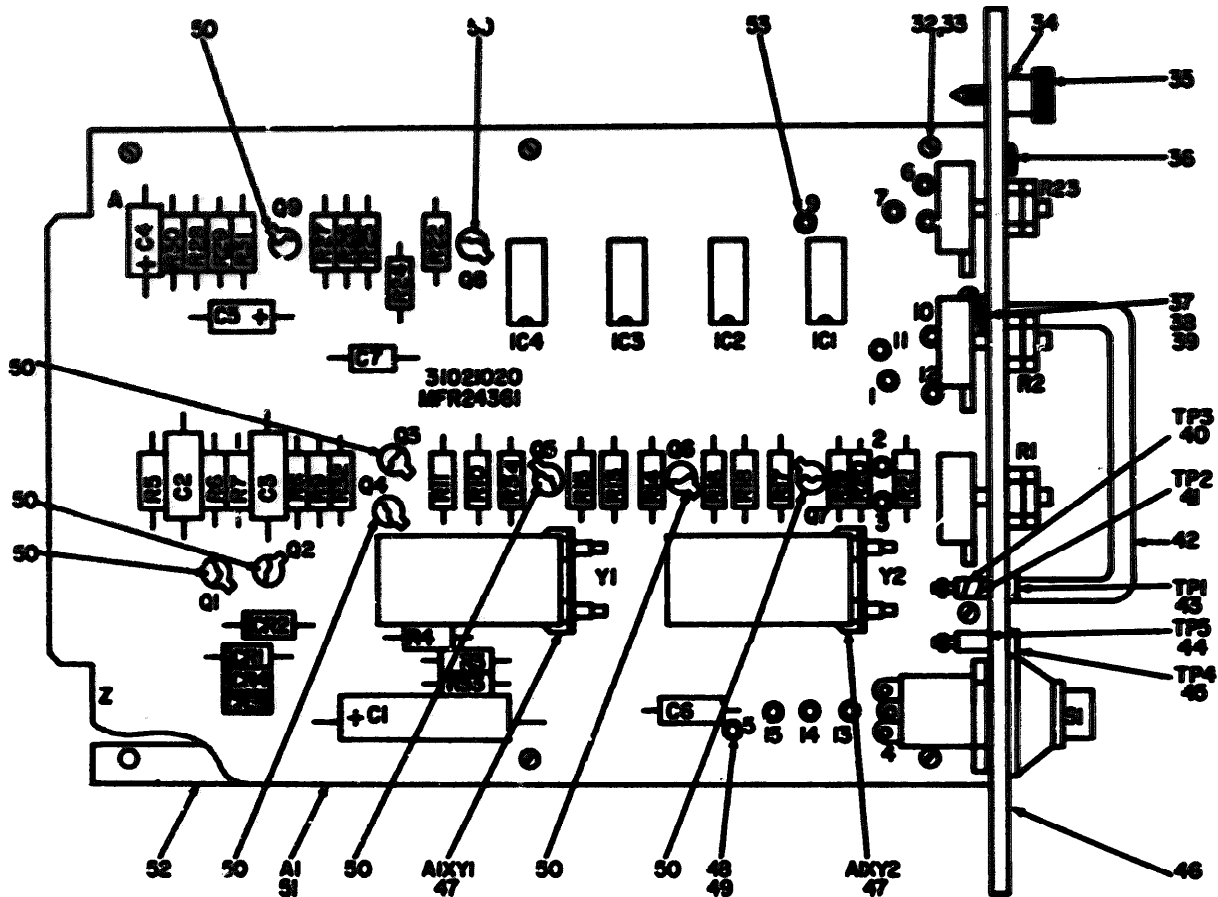
TM 11-5805-343-24P-1

(1) QUANTITY		(2) UNIT CODE	(3) NATIONAL STOCK NUMBER	(4) PART NUMBER	(5) FSC#	(6) DESCRIPTION	(7) USABLE OR CODE	(8) QTY REQ	(9) UNIT
(10) REQ NO.	(11) REQ NO.								
GROUP 01 RING RECEIVE ASSEMBLY (400)									
0	1	FA022	5910-00-000-4000	701100	90200	CAPACITOR, FIXED, ELECTROLYTIC		EA	6
0	2	FA022	5910-00-400-0010	0000001100	01340	CAPACITOR, FIXED, mica die.		EA	1
0	3	FA022	5910-00-770-0004	0010001076	01340	CAPACITOR, FIXED, ELECTROLYTIC		EA	1
0	4	FA022		70007	27700	CAPACITOR, FIXED, PLASTIC die.		EA	9
0	5	FA022	5910-00-770-0003	0010001706	01340	CAPACITOR, FIXED, ELECTROLYTIC		EA	4
0	6	FA022	5910-00-000-0014	701100	90200	CAPACITOR, FIXED, ELECTROLYTIC		EA	3
0	7	FA022	5910-00-000-7000	701100-1	90200	CAPACITOR, FIXED, ELECTROLYTIC		EA	1
0	8	FA022	5910-00-000-0000	00000000	14000	CAPACITOR, FIXED, PLASTIC die.		EA	1
0	9	FA022	5910-00-070-0000	701100	90200	CAPACITOR, FIXED, ELECTROLYTIC		EA	2
0	10	FA022	5910-00-000-0000	00000000	14000	CAPACITOR, FIXED, PLASTIC die.		EA	2
0	11	FA022	5910-00-400-4000	200	72000	CAPACITOR, FIXED, CERAMIC die.		EA	2
0	12	FA022		0000000000	01340	CAPACITOR, FIXED, mica die.		EA	1
0	13	FA022	5907-00-000-0000	14070	90100	SEMICONDUCTOR DEV. CR. DIODE		EA	12
0	14	FA022	4210-00-720-4400	344	24400	LAMP, INCANDESCENT		EA	1
0	15	FA022	5910-00-440-0000	00100000	00710	INTEGRATED CIRCUIT		EA	1
0	16	FA022	5910-00-700-0000	00000000	00710	INTEGRATED CIRCUIT		EA	1
0	17	FA022	5907-00-000-0000	200000	01340	TRANSISTOR		EA	10
0	18	FA022	5907-00-000-1000	200000	01340	TRANSISTOR		EA	1
0	19	FA022	5905-00-001-4130	00000000J	01340	RESISTOR, FIXED, COMPOSITION		EA	2
0	20	FA022	5905-00-000-7700	00000000J	01340	RESISTOR, FIXED, COMPOSITION		EA	1
0	21	FA022	5905-00-000-4000	00000000J	01340	RESISTOR, FIXED, COMPOSITION		EA	1
0	22	FA022	5905-00-000-4100	00000000J	01340	RESISTOR, FIXED, COMPOSITION		EA	1
0	23	FA022	5905-00-001-0100	00000000J	01340	RESISTOR, FIXED, COMPOSITION		EA	1
0	24	FA022	5905-00-000-0000	00000000J	01340	RESISTOR, FIXED, COMPOSITION		EA	1
0	25	FA022	5905-00-100-0000	00000000J	01340	RESISTOR, FIXED, COMPOSITION		EA	7
0	26	FA022	5905-00-000-0000	00000000J	01340	RESISTOR, FIXED, COMPOSITION		EA	2
0	27	FA022	5905-00-001-0000	00000000J	01340	RESISTOR, FIXED, COMPOSITION		EA	2
0	28	FA022	5905-00-000-0000	00000000J	01340	RESISTOR, FIXED, COMPOSITION		EA	1
0	29	FA022	5905-00-000-0000	00000000J	01340	RESISTOR, FIXED, COMPOSITION		EA	2
0	30	FA022	5905-00-100-0000	00000000J	01340	RESISTOR, FIXED, COMPOSITION		EA	2
0	31	FA022	5905-00-000-0000	00000000J	01340	RESISTOR, FIXED, COMPOSITION		EA	1
0	32	FA022	5905-00-000-4100	00000000J	01340	RESISTOR, FIXED, COMPOSITION		EA	1
0	33	FA022	5905-00-000-0000	00000000J	01340	RESISTOR, FIXED, COMPOSITION		EA	3
0	34	FA022	5905-00-000-7700	00000000J	01340	RESISTOR, FIXED, COMPOSITION		EA	2
0	35	FA022	5905-00-001-4400	00000000J	01340	RESISTOR, FIXED, COMPOSITION		EA	1
0	36	FA022	5905-00-001-0000	00000000J	01340	RESISTOR, FIXED, COMPOSITION		EA	1
0	37	FA022	5905-00-000-0000	00000000J	01340	RESISTOR, FIXED, COMPOSITION		EA	1
0	38	FA022	5905-00-000-0000	00000000J	01340	RESISTOR, FIXED, COMPOSITION		EA	1
0	39	FA022	5905-00-720-4000	00000000J	01340	RESISTOR, FIXED, COMPOSITION		EA	1

SECTION II

TM 11-5805-343-24P-1

(1) ILLUSTRATION		(2)	(3)	(4)	(5)	(6)	(7)	(8)
(a) FIG. NO.	(b) VIEW NO.	QTY. CODE	NATIONAL STOCK NUMBER	QTY. NUMBER	FIG. NO.	DESCRIPTION	USABLE QTY. CODE	QTY. IN UNIT
0	40	PA022	5905-00-424-2340	402007000	01240	RESISTOR,FIRED,COMPOSITION		2
0	41	PA022	5905-00-424-2372	402007000	01240	RESISTOR,FIRED,COMPOSITION		1
0	42	PA022	5905-00-424-2390	402007000	01240	RESISTOR,FIRED,COMPOSITION		2
0	43	PA022	5905-00-424-2324	402007000	01240	RESISTOR,FIRED,COMPOSITION		1
0	44	PA022	5905-00-424-2721	402007000	01240	RESISTOR,FIRED,COMPOSITION		1
0	45	HP72		402007000	10411	SWITCH,PUSH		1
0	46	PA022	5905-00-474-4410	11000404	24361	TRANSFORMER,DISCRIMINATOR		2
0	47	PA022	5905-00-282-2824	40200440-5	00044	SCREW,MACHINE		0
0	48	HP72		700040	70042	NUT,SELF-LOCKING,NEEDLE		10
0	49	PA022	5905-00-424-2991	102171	07047	MOUNTING PAD,ELECTRICAL COMPONENT		10
0	50	HP72		42204-2	71279	TERMINAL,STUD		0
0	51	PA022	5905-00-424-2720	40200	07771	SPLET,METALLIC		20
0	52	HP72		427100002	00040	NUT,PLAIN,CLASH		1
0	53	PA022	5905-00-424-2804	412004002	01040	SCREW,EXTERNALLY RELIEVED BODY		1
0	54	PA022	4210-00-420-0010	4020010-6	01001	LAMPHOLDER		1
0	55	PA022	5905-00-424-2810	4020010-15	01001	SCREW,MACHINE		2
0	56	PA022	5910-00-900-4211	4020010-000	01001	WASHER,FLAT		2
0	57	PA022	5910-00-900-4110	4020010-135	01001	WASHER,LOCK		6
0	58	PA022	5905-00-427-2826	00000000	20000	JACK,TIP		1
0	59	PA022	5905-00-424-2970	00000000	00201	JACK,TIP		1
0	60	PA022	5905-00-424-2940	00000000	00201	JACK,TIP		1
0	61	PA022	5905-00-424-2940	00000000	00201	JACK,TIP		1
0	62	HP72		1020-2	71279	HANDLE,CON		1
0	63	PA022	5905-00-424-4070	00000000	00201	JACK,TIP		1
0	64	HP72		40200440-6	00044	SCREW,MACHINE		2
0	65	HP72		21000114	24361	PANEL,FRONT		1
0	66	PA022	5905-00-424-4101	0020	07047	MOUNTING PAD,ELECTRICAL COMPONENT		1
0	67	PA01L	5905-00-423-0140	10000000	24361	CIRCUIT CARD ASSEMBLY		1
0	68	HP72		20000110	24361	BRACKET,DOUBLE ANGLE		1
0	69	PA022	5905-00-424-4102	10000	07047	MOUNTING PAD,ELECTRICAL COMPONENT		2
0	70	PA022	5905-00-424-4047	4020010-13	00001	SCREW,MACHINE		0



NOTE: FOR COMPLETE REFERENCE DESIGNATION
PREFIX WITH A7.

EL20003

Figure 10. Ring Send Assembly (A7) (Sheet 1 of 2)

REF. DES.	ITEM NO.	REF. DES.	ITEM NO.	REF. DES.	ITEM NO.
C1	1	Q6	10	R18	17
C2	2	Q7	10	R19	17
C3	2	Q8	10	R20	18
C4	3	Q9	10	R21	14
C5	4	R1	11	R22	21
C6	5	R2	12	R23	22
C7	6	R3	13	R24	16
CR1	7	R4	14	R25	23
CR2	7	R5	13	R26	17
CR3	7	R6	15	R27	24
CR4	7	R7	15	R28	25
IC1	8	R8	13	R29	26
IC2	9	R9	16	R30	26
IC3	9	R10	17	R31	27
IC4	9	R11	14	R32	23
Q1	10	R13	18	R33	28
Q2	10	R14	14	R34	20
Q3	10	R15	19	S1	29
Q4	10	R16	14	Y1	30
Q5	10	R17	20	Y2	31

EL2KD014

Figure 10. Ring Send Assembly (A7) (Sheet 2 of 2)

SECTION II

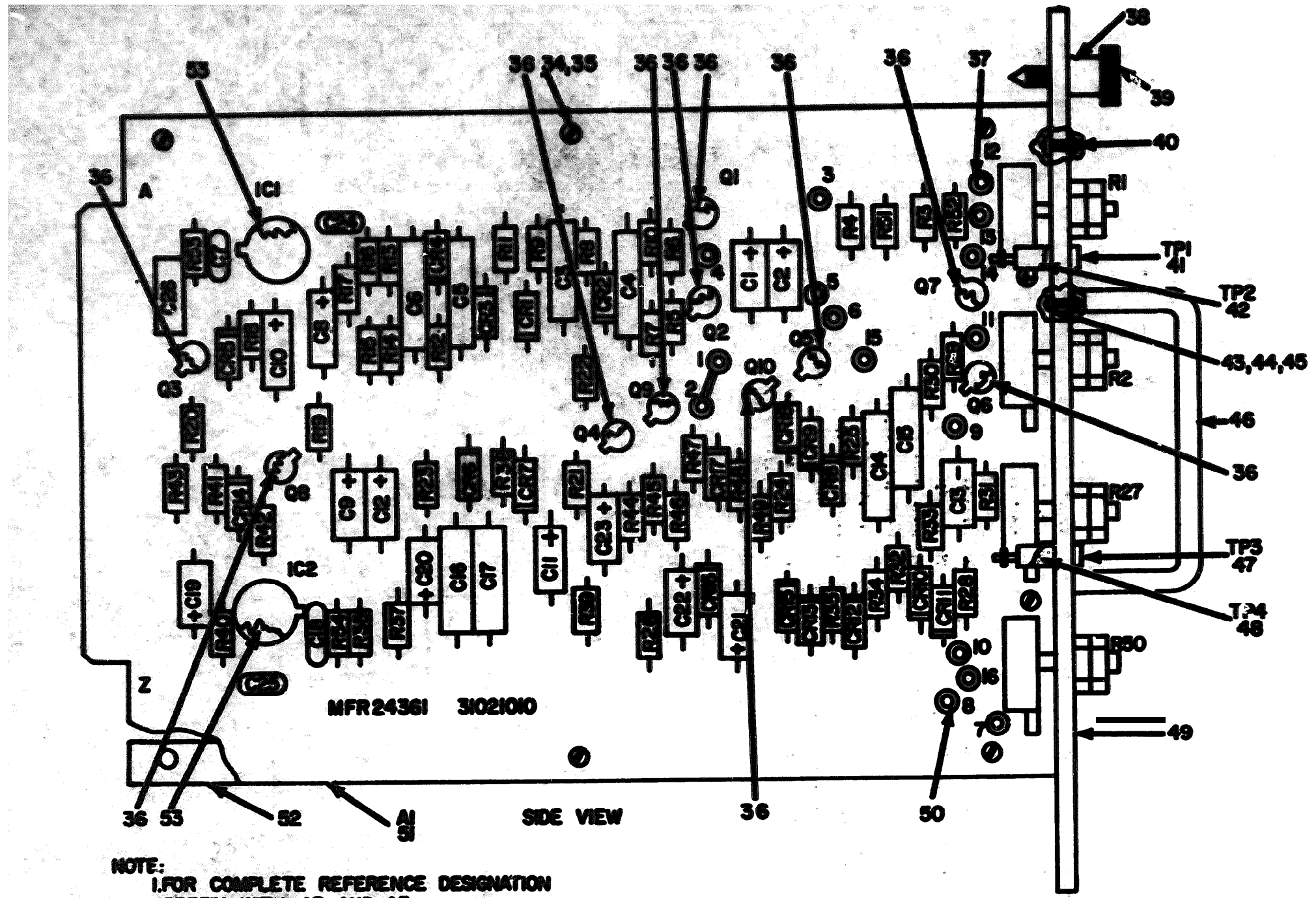
TM 11-5805-343-24P-1

QUANTITY		UNIT	DESCRIPTION	USABLE ON CODE	QTY	UNIT		
REQ. NO.	ISS. NO.							
GROUP 07 RING SEND ASSEMBLY (A7)								
10	1	PAGEZ	5010-00-470-4415	TE1300-1	54300	CAPACITOR, FIXED, ELECTROLYTIC	EA	1
10	2	HPZZ		VVPEY	Z7725	CAPACITOR, FIXED, PLASTIC	EA	2
10	3	PAGEZ	5010-00-041-7003	TE1157-1	54300	CAPACITOR, FIXED, ELECTROLYTIC	EA	1
10	4	PAGEZ	5010-00-037-1204	TE1140	54300	CAPACITOR, FIXED, ELECTROLYTIC	EA	1
10	5	HPZZ	5010-00-012-2077	000-000000-1032	72902	CAPACITOR, FIXED, CERAMIC	EA	1
10	6	PAGEZ	5010-00-030-5430	C01300225K	01340	CAPACITOR, FIXED, ELECTROLYTIC	EA	1
10	7	PAGEZ	5041-00-077-4004	10045	01340	SEMICONDUCTOR DEVICE, DIODE	EA	4
10	8	PAGEZ	5042-00-400-0040	NE217P	04713	INTEGRATED CIRCUIT	EA	1
10	9	PAGEZ	5043-00-471-2004	HC070P	04713	INTEGRATED CIRCUIT	EA	3
10	10	PAGEZ	5051-00-004-3105	20740A	01340	TRANSISTOR	EA	9
10	11	PAGEZ	5003-00-017-0730	RVS1AV08100A	01340	RESISTOR, VARIABLE	EA	1
10	12	PAGEZ	5003-00-077-7704	RVS1AV08001A	01340	RESISTOR, VARIABLE	EA	1
10	13	PAGEZ	5003-00-003-4000	RC070P02J	01340	RESISTOR, FIXED, COMPOSITION	EA	3
10	14	PAGEZ	5003-00-104-0000	RC070P02J5	01340	RESISTOR, FIXED, COMPOSITION	EA	3
10	15	PAGEZ	5003-00-025-0000	RC070P100P	01340	RESISTOR, FIXED, FILM	EA	2
10	16	PAGEZ	5003-00-003-7723	RC070P150J	01340	RESISTOR, FIXED, COMPOSITION	EA	2
10	17	PAGEZ	5003-00-007-0000	RC070P22J	01340	RESISTOR, FIXED, COMPOSITION	EA	4
10	18	PAGEZ	5003-00-001-0010	RC070P150J	01340	RESISTOR, FIXED, COMPOSITION	EA	2
10	19	PAGEZ	5003-00-141-1030	RC070P22J	01340	RESISTOR, FIXED, COMPOSITION	EA	1
10	20	PAGEZ	5003-00-724-4413	RC070P12J	01340	RESISTOR, FIXED, COMPOSITION	EA	2
10	21	PAGEZ	5003-00-724-3007	RC070P12J	01340	RESISTOR, FIXED, COMPOSITION	EA	1
10	22	PAGEZ	5003-00-203-2130	RVS1AV08002A	01340	RESISTOR, VARIABLE	EA	1
10	23	PAGEZ	5003-00-100-1270	RC070P12J5	01340	RESISTOR, FIXED, COMPOSITION	EA	2
10	24	PAGEZ	5003-00-004-0004	RC070P02J	01340	RESISTOR, FIXED, COMPOSITION	EA	1
10	25	PAGEZ	5003-00-119-3005	RC070P400J	01340	RESISTOR, FIXED, COMPOSITION	EA	1
10	26	PAGEZ	5003-00-004-0004	RC070P470J	01340	RESISTOR, FIXED, COMPOSITION	EA	2
10	27	PAGEZ	5003-00-004-0007	RC070P400J	01340	RESISTOR, FIXED, COMPOSITION	EA	1
10	28	PAGEZ	5003-00-003-4007	RC070P100J	01340	RESISTOR, FIXED, COMPOSITION	EA	1
10	29	HPZZ		W101P00R	10415	SWITCH, PUSH	EA	1
10	30	PAGEZ	5003-00-470-0004	31020401-6	24301	CRYSTAL UNIT	EA	1
10	31	PAGEZ	5003-00-470-0003	31020401-5	24301	CRYSTAL UNIT	EA	1
10	32	PAGEZ	5003-00-203-0234	ANS07C440-5	00044	SCREW, MACHINE	EA	0
10	33	HPZZ		70NTH40	72942	NUT, SELF-LOCKING, HEXAGON	EA	0
10	34	HPZZ		6E71C00032	04540	NUT, PLAIN, CLINCH	EA	1
10	35	PAGEZ	5305-00-413-3004	613030032	04540	SCREW, EXTERNALLY RELIEVED BODY	EA	1
10	36	HPZZ		ANS07C440-4	00044	SCREW, MACHINE	EA	2
10	37	PAGEZ	5000-00-034-3049	NS3253-15	04006	SCREW, MACHINE	EA	2
10	38	PAGEZ	5010-00-003-0211	NS15700-003	70900	WASHER, FLAT	EA	2
10	39	PAGEZ	5010-00-003-0110	NS3300-135	04006	WASHER, LOCK	EA	2

SECTION II

TM 11-5805-343-24P-1

QUANTITY		UNIT	NATIONAL STOCK NUMBER	PART NUMBER	YEAR	DESCRIPTION	USABLE ON CODE	EA	QTY REQ IN UNIT
NO	ITEM NO.								
10	41	PAPER	5325-00-425-7500	STITCHER	60370	JACK, TIP		EA	1
10	41	PAPER	5325-00-425-0970	STITCHER	60390	JACK, TIP		EA	1
10	41	PAPER		LENS-2	71270	WINDUP, STD		EA	1
10	41	PAPER	5325-00-427-2125	CONTRACT	52000	JACK, TIP		EA	1
10	41	PAPER	5325-00-427-4170	STITCHER	60390	JACK, TIP		EA	1
10	41	PAPER	5325-00-425-7500	STITCHER	60390	JACK, TIP		EA	1
10	41	PAPER		2102015	34201	WINDUP, STD		EA	1
10	41	PAPER		CONTRACT	61500	WINDUP, CATERAL UNIT		EA	2
10	41	PAPER		LENS-2	71270	WINDUP, STD		EA	15
10	41	PAPER	5325-00-425-0710	ALPH	57771	WINDUP, NEVALLS		EA	66
10	41	PAPER	5041-00-424-0091	10171	67007	WINDUP, NO. ELECTRI COMPONENT		EA	9
10	41	PAPER	5325-00-425-0170	2102020	34201	CIRCUIT CARD ASSEMBLY		EA	1
10	41	PAPER		2102010	34201	CIRCUIT, DOUBLE ANGLE		EA	1
10	41	PAPER		21020	57771	WINDUP, NEVALLS		EA	2



NOTE:
 1. FOR COMPLETE REFERENCE DESIGNATION
 PREFIX WITH A3 AND A5.
 2. TERMINAL STUDS NUMBERED 1-16.

Figure 11. Tone Converter Assembly (A3) (Sheet 1 of 2)

EL2KDO15

REF DES.	ITEM NO.	REF DES.	ITEM NO.	REF DES.	ITEM NO.	REF DES.	ITEM NO.	REF DES.	ITEM NO.	REF DES.	ITEM NO.
C1	1	C20	5	CR3	9	R2	14	R21	28	R40	25
C2	1	C21	4	CR14	10	R3	15	R22	29	R41	26
C3	2	C22	6	CR5	10	R4	16	R23	30	R42	26
C4	2	C23	6	CR6	10	R5	17	R24	26	R43	27
C5	2	C24	7	CR7	9	R6	18	R25	30	R44	28
C6	2	C25	7	CR8	9	R7	18	R26	31	R45	29
C7	3	C26	8	IC1	11	R8	19	R27	14	R46	30
C8	4	CR1	9	IC2	11	R9	20	R28	17	R47	26
C9	5	CR2	9	Q1	12	R10	21	R29	18	R48	30
C10	4	CR3	9	Q2	12	R11	22	R30	18	R49	31
C11	6	CR4	9	Q3	12	R12	22	R31	19	R50	13
C12	6	CR5	10	Q4	12	R13	23	R32	20	R51	32
C13	1	CR6	10	Q5	12	R14	23	R33	21	R52	32
C14	2	CR7	10	Q6	12	R15	24	R34	22	R53	33
C15	2	CR8	9	Q7	12	R16	24	R35	22	R54	33
C16	2	CR9	9	Q8	12	R17	25	R36	23		
C17	2	CR10	9	Q9	12	R18	26	R37	23		
C18	3	CR11	9	Q10	12	R19	26	R38	24		
C19	4	CR12	9	R1	13	R20	27	R39	24		

EL2KDC16

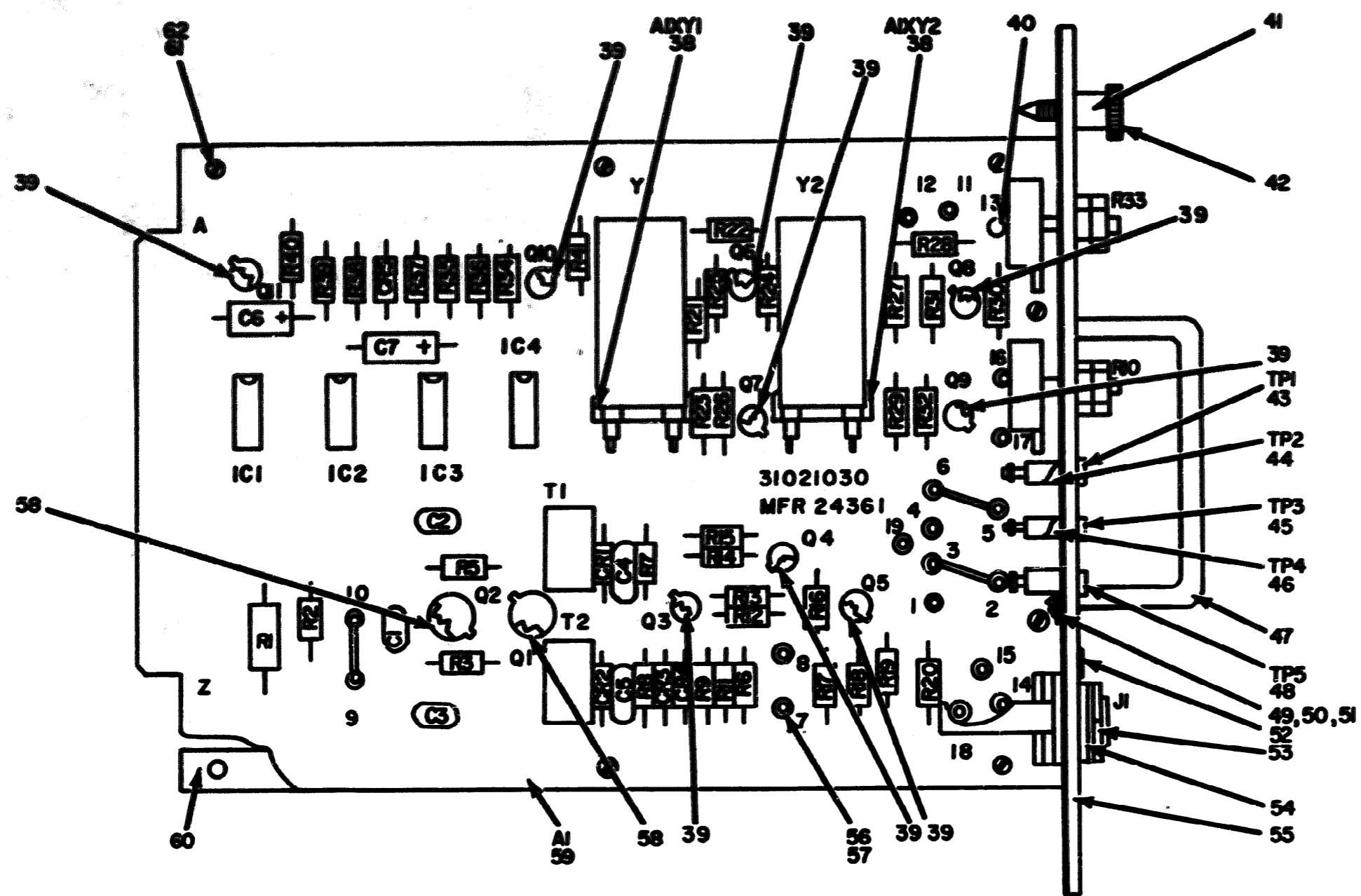
Figure 11. Tone Converter Assembly (A3) (Sheet 2 of 2)

(1) QUANTITY		(2) ITEM NO.	(3) PART CODE	(4) NATIONAL STOCK NUMBER	(5) PART NUMBER	(6) FORM	(7) DESCRIPTION	(8) USABLE ON CODE	(9) QTY REC IN UNIT
GROUP 08 TONE CONVERTER ASSEMBLY (A3)									
11	1	PAGEZ	9910-00-431-0102	28282010202	00103		CAPACITOR, FIXED, ELECTROLYTIC	EA	3
11	2	PAGEZ	9910-00-435-2734	441741	10095		CAPACITOR, FIXED, PLASTIC DIELECTRIC	EA	8
11	3	IBZZZ		CRMP0101000	01340		CAPACITOR, FIXED, NECA DIELECTRIC	EA	2
11	4	PAGEZ	9910-00-444-0410	TE1200	90000		CAPACITOR, FIXED, ELECTROLYTIC	EA	4
11	5	PAGEZ	9910-00-434-0000	TE1150	90000		CAPACITOR, FIXED, ELECTROLYTIC	EA	2
11	6	PAGEZ	9910-00-441-0001	TE1150	90000		CAPACITOR, FIXED, ELECTROLYTIC	EA	4
11	7	IBZZZ		CRMP0300000	01340		CAPACITOR, FIXED, NECA DIELECTRIC	EA	2
11	8	PAGEZ	9910-00-442-0277	005-0003500-1001	72002		CAPACITOR, FIXED, CERAMIC DIELECTRIC	EA	1
11	9	PAGEZ	9901-00-077-6004	1M145	01340		SEMICONDUCTOR DEVICE, DIODE	EA	12
11	10	PAGEZ	9901-00-085-3001	1M170	99100		SEMICONDUCTOR DEVICE, DIODE	EA	6
11	11	PAGEZ	9910-00-442-0002	IC170000	04713		INTEGRATED CIRCUIT	EA	2
11	12	PAGEZ	9901-00-004-3105	2M100A	01340		TRANSISTOR	EA	10
11	13	PAGEZ	9905-00-640-0010	RVR1AY0100A	01340		RESISTOR, VARIABLE	EA	2
11	14	PAGEZ	9905-00-677-6767	RVR1AY0200A	01340		RESISTOR, VARIABLE	EA	2
11	15	PAGEZ	9905-00-720-4413	RC070F120J	01340		RESISTOR, FIXED, COMPOSITION	EA	1
11	16	PAGEZ	9905-00-681-0010	RC070F150J	01340		RESISTOR, FIXED, COMPOSITION	EA	1
11	17	PAGEZ	9905-00-684-2304	RC070F200J	01340		RESISTOR, FIXED, COMPOSITION	EA	2
11	18	PAGEZ	9905-00-684-2700	RC070F270J	01340		RESISTOR, FIXED, COMPOSITION	EA	4
11	19	PAGEZ	9905-00-683-2304	RC070F221J	01340		RESISTOR, FIXED, COMPOSITION	EA	2
11	20	PAGEZ	9905-00-684-0907	RC070F400J	01340		RESISTOR, FIXED, COMPOSITION	EA	2
11	21	PAGEZ	9905-00-720-3007	RC070F910J	01340		RESISTOR, FIXED, COMPOSITION	EA	2
11	22	PAGEZ	9905-00-683-7721	RC070F100J	01340		RESISTOR, FIXED, COMPOSITION	EA	4
11	23	PAGEZ	9905-00-691-0100	RC070F300J	01340		RESISTOR, FIXED, COMPOSITION	EA	4
11	24	PAGEZ	9905-00-683-2304	RC070F470J	01340		RESISTOR, FIXED, COMPOSITION	EA	4
11	25	PAGEZ	9905-00-680-3401	RC070F150J	01340		RESISTOR, FIXED, COMPOSITION	EA	2
11	26	PAGEZ	9905-00-105-3005	RC070F020J	01340		RESISTOR, FIXED, COMPOSITION	EA	6
11	27	PAGEZ	9905-00-684-9904	RC070F120J	01340		RESISTOR, FIXED, COMPOSITION	EA	2
11	28	PAGEZ	9905-00-681-9900	RC070F300J	01340		RESISTOR, FIXED, COMPOSITION	EA	2
11	29	PAGEZ	9905-00-680-9900	RC070F470J	01340		RESISTOR, FIXED, COMPOSITION	EA	2
11	30	PAGEZ	9905-00-104-1000	RC070F150J	01340		RESISTOR, FIXED, COMPOSITION	EA	4
11	31	PAGEZ	9905-00-681-0402	RC070F100J	01340		RESISTOR, FIXED, COMPOSITION	EA	2
11	32	PAGEZ	9905-00-680-0470	RC070F200J	01340		RESISTOR, FIXED, COMPOSITION	EA	2
11	33	PAGEZ	9905-00-683-7721	RC070F150J	01340		RESISTOR, FIXED, COMPOSITION	EA	2
11	34	PAGEZ	9905-00-282-0524	AN007C440-5	00044		SCREW, MACHINE	EA	8
11	35	IBZZZ		7M1000	72002		NUT, SELF-LOCKING, HEXAGON	EA	10
11	36	PAGEZ	9901-00-424-0001	10171	07047		ROUTING PAD, ELECTRICAL COMPONENT	EA	10
11	37	IBZZZ		AS004-2	71270		TERMINAL, STUD	EA	16
11	38	IBZZZ		0271C0002	00040		NUT, PLASTIC, CLINCH	EA	1
11	39	PAGEZ	9905-00-443-0001	613000002	00040		SCREW, EXTERNALLY RELIEVED BODY	EA	1

SECTION II

TM 11-5805-343-24P-1

CLASSIFICATION		QTY	UNIT	DESCRIPTION	REMARKS	QTY	UNIT
CLASS	GROUP						
11	46	2872	AM80PC440-0	00044	SCREW, MACHINE	EA	2
11	46	04022	3025-00-027-000	00000	JACK, TIP	EA	1
11	46	04022	3025-00-000-0770	00000	JACK, TIP	EA	1
11	46	04022	3040-00-070-0100	00000	SCREW, MACHINE	EA	2
11	46	04022	3010-00-070-0211	00000	WASHER, FLAT	EA	2
11	46	04022	3010-00-010-0110	00000	WASHER, LOCK	EA	2
11	46	04022	3040-00-070-0100	1200-1	WASHER, DOM	EA	1
11	47	04022	3025-00-000-7040	00000	JACK, TIP	EA	1
11	46	04022	3025-00-000-7040	00000	JACK, TIP	EA	1
11	46	2872	21000102	04000	PANEL, FRONT	EA	1
11	50	04022	3025-00-000-0700	07771	SOLEY, METALLIC	EA	20
11	50	2872	31000010	04000	CIRCUIT CARD ASSEMBLY	EA	1
11	50	2872	31000010	04000	BRACKET, DOUBLE ANGLE	EA	1
11	50	2872	3000-00-010-0002	07007	HEATING PAD, ELECTRICAL COMPONENT	EA	2



NOTE: FOR COMPLETE REFERENCE DESIGNATION
PREFIX WITH A1

Figure 12. Tone Keyer Assembly (A1) (Sheet 1 of 2)

EL2K0017

REF. DES.	ITEM NO.	REF. DES.	ITEM NO.	REF. DES.	ITEM NO.	REF. DES.	ITEM NO.
C1	1	Q2	11	R10	19	R28	29
C2	2	Q3	12	R11	20	R29	30
C3	2	Q4	12	R12	21	R30	17
C4	3	Q5	12	R13	22	R31	28
C5	3	Q6	12	R14	21	R32	28
C6	4	Q7	12	R15	23	R33	31
C7	5	Q8	12	R16	24	R34	32
CR1	6	Q9	12	R17	25	R35	32
CR2	6	Q10	12	R18	26	R36	33
CR3	7	Q11	12	R19	27	R37	28
CR4	7	R1	13	R20	28	R38	33
CR5	6	R2	14	R21	29	R39	21
IC1	8	R3	15	R22	29	R40	21
IC2	9	R5	15	R23	30	R41	34
IC3	9	R6	16	R24	17	T1	35
IC4	9	R7	17	R25	28	T2	35
J1	10	R8	17	R26	28	Y1	36
Q1	11	R9	18	R27	29	Y2	37

EL2KD018

Figure 12. Tone Keyer Assembly (A1) (Sheet 2 of 2)

SECTION II

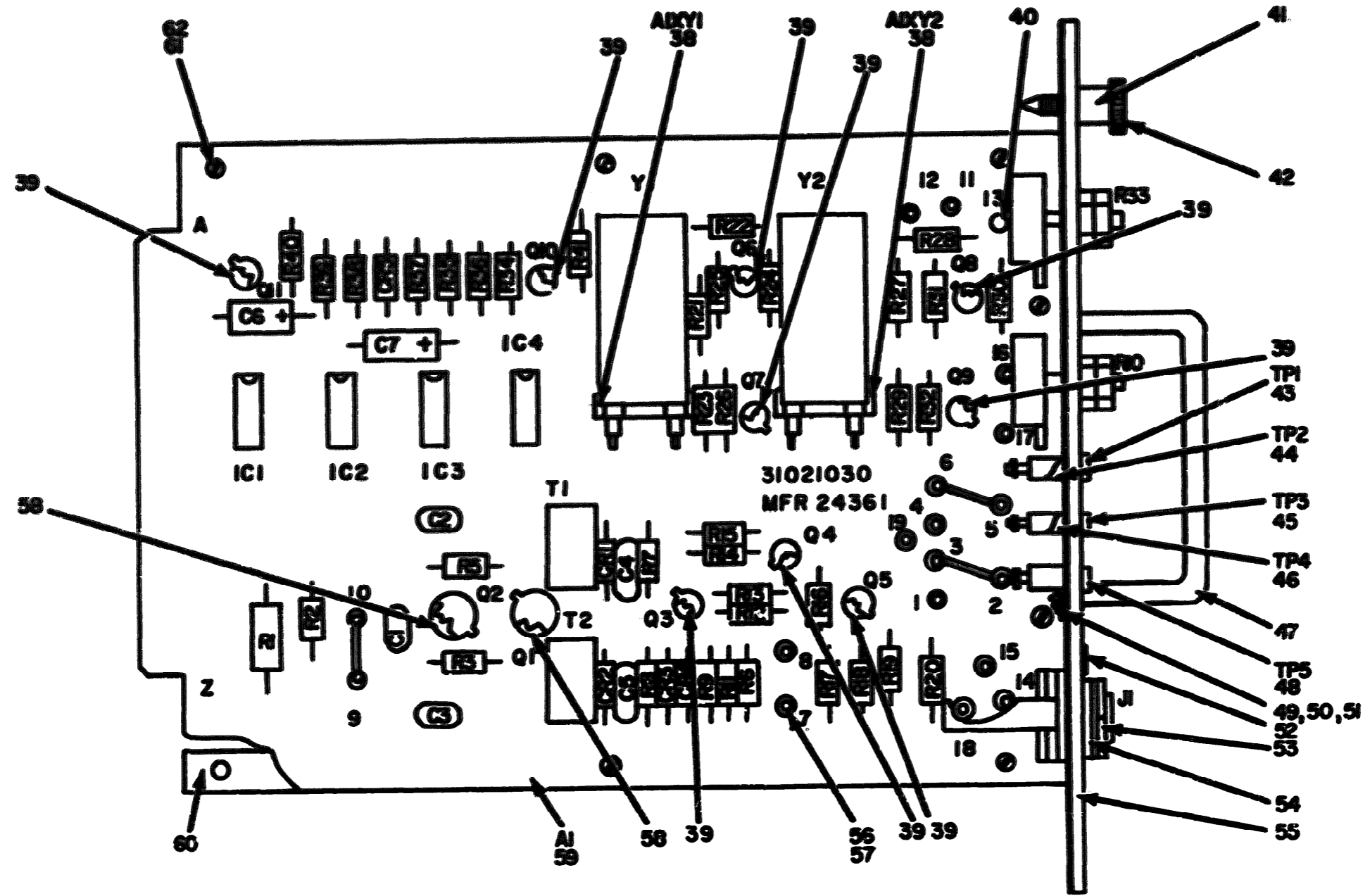
TM 11-5805-343-24P-1

QUANTITY		UNIT CODE	NATIONAL STOCK NUMBER	PART NUMBER	FORM	DESCRIPTION	USABLE QTY CODE	QTY INC IN UNIT
QTY	UNIT							
GROUP 10 TONE KEVER ASSEMBLY (ALL)								
12	1	PAGE2	9919-00-002-0040	2659-0007970-104	72902	CAPACITOR, FIXED, CERAMIC	EA	1
12	2	PAGE2	9919-00-001-1040	081-0001970-104	72902	CAPACITOR, FIXED, CERAMIC	EA	2
12	3	PAGE2	9919-00-002-0077	082-0001970-102	72902	CAPACITOR, FIXED, CERAMIC	EA	2
12	4	PAGE2	9919-00-004-0000	TE1133	94209	CAPACITOR, FIXED, ELECTROLYTIC	EA	1
12	5	PAGE2	9919-00-000-0400	CE1100220K	01349	CAPACITOR, FIXED, ELECTROLYTIC	EA	1
12	6	PAGE2	0001-00-105-0001	1A270	00100	SEMICONDUCTOR DEVICE, DIODE	EA	6
12	7	PAGE2	9913-00-077-0004	1M045	01349	SEMICONDUCTOR DEVICE, DIODE	EA	2
12	8	PAGE2	9913-00-099-0004	HC017P	04713	INTEGRATED CIRCUIT	EA	1
12	9	PAGE2	9913-00-071-0004	HC016P	04713	INTEGRATED CIRCUIT	EA	9
12	10	PAGE2	9913-00-192-4701	J1009	01349	JACK, TELEPHONE	EA	1
12	11	PAGE2	9913-00-092-0000	2M1304	01349	TRANSISTOR	EA	2
12	12	PAGE2	0001-00-004-3105	2M740A	01349	TRANSISTOR	EA	9
12	13	PAGE2	9905-00-070-0004	RC020F301J	01349	RESISTOR, FIXED, COMPOSITION	EA	1
12	14	PAGE2	9905-00-070-1724	RC020F151J	01349	RESISTOR, FIXED, COMPOSITION	EA	1
12	15	PAGE2	9905-00-080-4100	RC070F311J	01349	RESISTOR, FIXED, COMPOSITION	EA	2
12	16	XXXX		RC070SELECTED	01349	RESISTOR, FIXED, COMPOSITION	EA	1
12	17	PAGE2	9905-00-081-0010	RC070F150J	01349	RESISTOR, FIXED, COMPOSITION	EA	4
12	18	PAGE2	9905-00-700-4400	RC070F130J	01349	RESISTOR, FIXED, COMPOSITION	EA	1
12	19	PAGE2	9905-00-500-9130	RVSLAY30502A	01349	RESISTOR, VARIABLE	EA	1
12	20	PAGE2	9905-00-100-3005	RC070E100K	01349	RESISTOR, FIXED, COMPOSITION	EA	1
12	21	PAGE2	9905-00-000-0000	RC070F472J	01349	RESISTOR, FIXED, COMPOSITION	EA	4
12	22	PAGE2	5905-00-686-3370	RC070F202J	01349	RESISTOR, FIXED, COMPOSITION	EA	1
12	23	PAGE2	5905-00-607-6698	RC070F400J	01349	RESISTOR, FIXED, COMPOSITION	EA	1
12	24	PAGE2	5905-00-689-7722	RC070F101J	01349	RESISTOR, FIXED, COMPOSITION	EA	1
12	25	PAGE2	5905-00-412-4058	RC070F392J	01349	RESISTOR, FIXED, COMPOSITION	EA	1
12	26	PAGE2	5905-00-643-2241	RC070F312J	01349	RESISTOR, FIXED, COMPOSITION	EA	1
12	27	PAGE2	9905-00-000-0000	RC070F300J	01349	RESISTOR, FIXED, COMPOSITION	EA	1
12	28	PAGE2	9905-00-007-0000	RC070F220J	01349	RESISTOR, FIXED, COMPOSITION	EA	6
12	29	PAGE2	9905-00-104-0000	RC070E302K	01349	RESISTOR, FIXED, COMPOSITION	EA	4
12	30	PAGE2	5905-00-726-4411	RC070F120J	01349	RESISTOR, FIXED, COMPOSITION	EA	2
12	31	PAGE2	5905-00-617-2730	RVSLAY30102A	01349	RESISTOR, VARIABLE	EA	1
12	32	PAGE2	5905-00-683-7723	RC070F152J	01349	RESISTOR, FIXED, COMPOSITION	EA	2
12	33	PAGE2	5905-00-486-9956	RC070F021J	01349	RESISTOR, FIXED, COMPOSITION	EA	2
12	34	PAGE2	9905-00-204-0000	RC070E021K	01349	RESISTOR, FIXED, COMPOSITION	EA	1
12	35	PAGE2	5950-00-907-5674	30FC	90095	TRANSFORMER, PULSE	EA	2
12	36	PAGE2	9913-00-076-0001	31020401-1	24361	CRYSTAL UNIT	EA	1
12	37	PAGE2	9913-00-076-0004	31020401-2	24361	CRYSTAL UNIT	EA	1
12	38	XXXX		0000067	91506	HOLDER, CRYSTAL UNIT	EA	2

SECTION II

TM 11-5805-343-24P-1

(1) ILLUSTRATION		(2)	(3)	(4)	(5)	(6)	(7)	(8)
(a) FIG. NO.	(b) VIEW NO.	QTR CODE	NATIONAL STOCK NUMBER	PART NUMBER	PRCN	DESCRIPTION	USABLE QTR CODE	QTY ING IN UNIT
12	34	XPZZ	5041-00-434-0503	10171	07047	MOUNTING PAD, ELECTRICAL COMPONENT	EA	9
12	40	XQZZ		42141	37771	EYELET, METALLIC	EA	2
12	40	XDFZ		627100032	00340	NUT, PLAIN, C/CL INCH	EA	1
12	40	PAFZ	5035-00-443-1004	613000032	00340	SCREW, EXTERNALLY RELIEVED BODY	EA	1
12	40	PAFZ	5035-00-027-2535	000200000	20000	JACK, TIP	EA	1
12	44	PAFZ	5035-00-000-0070	SKT10000	00701	JACK, TIP	EA	1
12	40	PAFZ	5035-00-000-7040	SKT10000E	00701	JACK, TIP	EA	1
12	40	PAFZ	5035-00-000-7040	SKT10000L	00701	JACK, TIP	EA	1
12	40	XDFZ		1203-2	71279	WASHER, CON	EA	1
12	40	PAFZ	5035-00-001-4070	SKT10000K	00701	JACK, TIP	EA	1
12	40	PAFZ	5000-00-000-2044	NS13010-15	10000	SCREW, MACHINE	EA	7
12	50	PAFZ	5310-00-595-6211	NS15700-000	00000	WASHER, FLAT	EA	2
12	50	PAFZ	5010-00-000-0110	NS13010-100	00000	WASHER, LOCK	EA	2
12	50	XDFZ		ANS07C440-6	00000	SCREW, MACHINE	EA	2
12	50	PAFZ	5310-00-477-6312	16000401	24041	NUT, PLAIN, HEXAGON	EA	1
12	54	PAFZ	5010-00-470-7300	16000402	24041	WASHER, NONMETALLIC	EA	1
12	50	XDFZ		21004100	24041	PANEL, FRONT	EA	1
12	50	XQZZ		42004-2	71279	TERMINAL, STUD	EA	10
12	57	PAQZZ	1025-00-901-0700	02070	37771	EYELET, METALLIC	EA	02
12	50	PAQZZ	5999-00-054-0161	10000	07047	MOUNTING PAD, ELECTRICAL COMPONENT	EA	2
12	50	PAFOL	5305-00-421-0172	31021000-1	24001	CIRCUIT CARD ASSEMBLY	EA	1
12	60	XQZZ		21020110	24041	BRACKET, DOUBLE ANGLE	EA	1
12	61	PAFZ	5305-00-202-0524	ANS07C440-3	00000	SCREW, MACHINE	EA	0
12	00	XDFZ		7000040	72940	NUT, SELF-LOCKING, HEXAGON	EA	10



NOTE: FOR COMPLETE REFERENCE DESIGNATION
PREFIX WITH A2.

Figure 13. Tone Keyer Assembly (A2) (Sheet 2 of 2)

EL2KDO19

REF. DES.	ITEM NO.	REF. DES.	ITEM NO.	REF. DES.	ITEM NO.	REF. DES.	ITEM NO.
C1	1	Q2	11	R10	19	R28	29
C2	2	Q3	12	R11	20	R29	30
C3	2	Q4	12	R12	21	R30	17
C4	3	Q5	12	R13	22	R31	28
C5	3	Q6	12	R14	21	R32	28
C6	4	Q7	12	R15	23	R33	31
C7	5	Q8	12	R16	24	R34	32
CR1	6	Q9	12	R17	25	R35	32
CR2	6	Q10	12	R18	26	R36	33
CR3	7	Q11	12	R19	27	R37	28
CR4	7	R1	13	R20	28	R38	33
CR5	6	R2	14	R21	29	R39	21
IC1	8	R3	15	R22	29	R40	21
IC2	9	R5	15	R23	30	R41	34
IC3	9	R6	16	R24	17	T1	35
IC4	9	R7	17	R25	28	T2	35
J1	10	R8	17	R26	28	Y1	36
Q1	11	R9	18	R27	29	Y2	37

EL2KD020

Figure 13. Tone Keyer Assembly (A2) (Sheet 2 of 2).

SECTION II

TM 11-5805343-24P-1

QUANTITY		UNIT	NATIONAL STOCK NUMBER	PART NUMBER	FSC	DESCRIPTION	USABLE ON CODE	CLASS	QTY REQ IN UNIT
REQ NO	REQ P-3								
GROUP II: TONE KEYS ASSEMBLY (A2)									
13	1	PAZZ	8910-00-002-0800	6025-00070-100W	72902	CAPACITOR, FIXED, CERAMIC		EA	1
13	2	PAZZ	8910-00-031-1445	601-00030-100K	72902	CAPACITOR, FIXED, CERAMIC		EA	2
13	3	PAZZ	9900-00-002-0877	605-00030-100Z	72902	CAPACITOR, FIXED, CERAMIC		EA	2
13	4	PAZZ	8910-00-034-0800	TE1185	66200	CAPACITOR, FIXED, ELECTROLYTIC		EA	1
13	5	PAZZ	8910-00-000-0430	CS100200K	61300	CAPACITOR, FIXED, ELECTROLYTIC		EA	1
13	6	PAZZ	8901-00-025-2001	1M270	99100	SEMICONDUCTOR DEVICE, DIODE		EA	3
13	7	PAZZ	8901-00-077-0204	1M045	61300	SEMICONDUCTOR DEVICE, DIODE		EA	2
13	8	PAZZ	8902-00-033-0300	NC017P	04713	INTEGRATED CIRCUIT		EA	1
13	9	PAZZ	8902-00-071-0305	NC010P	04713	INTEGRATED CIRCUIT		EA	3
13	10	PAZZ	8905-00-100-0700	J3000	61300	JACK, TELEPHONE		EA	1
13	11	PAZZ	8901-00-002-0800	2N1304	61300	TRANSISTOR		EA	2
13	12	PAZZ	8901-00-004-3105	2N1304A	61300	TRANSISTOR		EA	9
13	13	PAZZ	8905-00-070-0204	RC000F201J	61300	RESISTOR, FIXED, COMPOSITION		EA	1
13	14	PAZZ	8905-00-070-1704	RC000F101J	61300	RESISTOR, FIXED, COMPOSITION		EA	1
13	15	PAZZ	8905-00-002-4100	RC000F513J	61300	RESISTOR, FIXED, COMPOSITION		EA	2
13	16	PAZZ		RC07SELECTED	61300	RESISTOR, FIXED, COMPOSITION		EA	1
13	17	PAZZ	8905-00-001-0010	RC000F153J	61300	RESISTOR, FIXED, COMPOSITION		EA	4
13	18	PAZZ	8905-00-700-4400	RC000F130J	61300	RESISTOR, FIXED, COMPOSITION		EA	1
13	19	PAZZ	8905-00-000-5130	WF0400000A	61300	RESISTOR, VARIABLE		EA	1
13	20	PAZZ	8905-00-100-3005	RC000F1000J5	61300	RESISTOR, FIXED, COMPOSITION		EA	1
13	21	PAZZ	8905-00-000-9900	RC000F070J	61300	RESISTOR, FIXED, COMPOSITION		EA	4
13	22	PAZZ	8905-00-000-3370	RC000F200J	61300	RESISTOR, FIXED, COMPOSITION		EA	1
13	23	PAZZ	8905-00-000-0000	RC000F000J	61300	RESISTOR, FIXED, COMPOSITION		EA	1
13	24	PAZZ	8905-00-000-7721	RC000F101J	61300	RESISTOR, FIXED, COMPOSITION		EA	1
13	25	PAZZ	8905-00-000-4000	RC000F300J	61300	RESISTOR, FIXED, COMPOSITION		EA	1
13	26	PAZZ	8905-00-000-2001	RC000F510J	61300	RESISTOR, FIXED, COMPOSITION		EA	1
13	27	PAZZ	8905-00-000-0900	RC000F300J	61300	RESISTOR, FIXED, COMPOSITION		EA	1
13	28	PAZZ	8905-00-000-0002	RC000F221J	61300	RESISTOR, FIXED, COMPOSITION		EA	6
13	29	PAZZ	8905-00-100-0000	RC000F000J5	61300	RESISTOR, FIXED, COMPOSITION		EA	4
13	30	PAZZ	5905-00-725-4411	RC000F120J	61300	RESISTOR, FIXED, COMPOSITION		EA	2
13	31	PAZZ	5905-00-417-2730	WF0400000A	61300	RESISTOR, VARIABLE		EA	1
13	32	PAZZ	5905-00-686-7723	RC000F100J	61300	RESISTOR, FIXED, COMPOSITION		EA	2
13	33	PAZZ	5905-00-686-9996	RC000F021J	61300	RESISTOR, FIXED, COMPOSITION		EA	2
13	34	PAZZ	5905-00-204-6358	RC000F000J5	61300	RESISTOR, FIXED, COMPOSITION		EA	1
13	35	PAZZ	5950-00-907-5674	33FC	90005	TRANSFORMER, PULSE		EA	2
13	36	PAZZ	5955-00-476-8331	31020401-3	24361	CRYSTAL UNIT		EA	1
13	37	PAZZ	5955-00-476-8032	31020401-4	24361	CRYSTAL UNIT		EA	1
13	38	PAZZ		8000067	91806	HOLDER, CRYSTAL UNIT		EA	2
13	39	PAZZ	5961-00-421-9591	10171	07067	Mounting PAD, ELECTRICAL COMPONENT		EA	9
13	40	PAZZ		A2161	S7711	EYELET, MET		EA	2

SECTION II

TM 11-5805-343-24P-1

ILLUSTRATION		QTY REQ UNIT	QTY REQ UNIT	DESCRIPTION	USABLE ON CODE			
FIG NO.	QTY REQ UNIT							
QTY REQ UNIT	QTY REQ UNIT	QTY REQ UNIT	QTY REQ UNIT	QTY REQ UNIT	QTY REQ UNIT			
13	41	XDFZ		62710032	6240	NUT, FLASH, CLIND	EA	1
13	42	PAFZ	3305-00-443-3204	61320032	6240	SCRN, EXTERNALLY BELIEVED BSW	EA	1
13	43	PAFZ	3305-00-427-3205	62020030	20429	JACK, TIP	EA	1
13	44	PAFZ	3305-00-426-3270	SKT1002	92291	JACK, TIP	EA	1
13	45	PAFZ	3305-00-425-7640	SKT100000E	92291	JACK, TIP	EA	1
13	46	PAFZ	3305-00-425-7640	SKT100100M	92291	JACK, TIP	EA	1
13	47	XDFZ		1231-2	71279	WHEEL, SW	EA	1
13	48	PAFZ	3305-00-421-4570	SKT10BLACK	92291	JACK, TIP	EA	1
13	49	PAFZ	3305-00-424-6540	MS15233-15	92006	SCRN, MACHINE	EA	2
13	50	PAFZ	3310-00-325-6211	W315795-005	92006	WASHER, FLAT	EA	2
13	51	PAFZ	3310-00-325-6110	W33335-135	92006	WASHER, LOCK	EA	2
13	52	XDFZ		ANS37C440-6	62044	SCRN, MACHINE	EA	2
13	53	PAFZ	3310-00-477-6312	16020421	24361	NUT, FLASH, HEXAGON	EA	1
13	54	PAFZ	3310-00-475-7500	16020422	24361	WASHER, NONMETALLIC	EA	1
13	55	XDFZ		21004103	24361	PANEL, FRONT	EA	1
13	56	XDFZ		AS204-2	71279	TERMINAL, STD	EA	19
13	57	PAFZ	3304-00-301-6730	A1973	57771	EYELET, METALLIC	EA	62
13	58	PAFZ	3300-00-004-6181	10020	07047	MOUNTING PAD, ELECTRICAL COMPONENT	EA	2
13	59	PAFOL	3305-00-422-6100	31021020-2	24361	CIRCUIT CARD ASSEMBLY	EA	1
13	60	XDFZ		21029110	24361	BRACKET, DOUBLE ANGLE	EA	1
13	61	PAFZ	3305-00-322-6324	ANS37C440-6	62044	SCRN, MACHINE	EA	6
13	62	XDFZ		720100	72002	NUT, SELF-LOCKING, HEXAGON	EA	10

NATIONAL STOCK NUMBER AND PART NUMBER INDEX
NOTE: LATEST NATIONAL STOCK NUMBER AND PART NUMBER ASSIGNMENTS ARE INCLUDED AT END OF INDEX

STOCK NUMBER	FIGURE NO.	ITEM NO.	STOCK NUMBER	FIGURE NO.	ITEM NO.
5901-00-022-0070	8	29	5910-00-403-4420	9	11
5310-00-027-7247	2	3	5905-00-421-0161	7	62
5310-00-027-7247	3	32	5905-00-421-0164	3	26
5310-00-027-7247	4	33	5905-00-421-0169	9	67
5905-00-024-0121	7	61	5905-00-421-0170	10	51
5905-00-024-0121	8	42	5905-00-421-0172	12	59
5905-00-024-0121	9	65	5905-00-421-0193	1	1
5905-00-024-0121	12	68	5905-00-421-0202	1	3
5905-00-024-0121	13	26	5905-00-421-0203	1	2
5305-00-024-0242	7	28	5905-00-421-0253	1	8
5305-00-024-0247	9	70	5905-00-421-0259	1	9
5305-00-024-0249	3	36	5905-00-421-0260	1	5
5305-00-024-0249	4	38	5961-00-424-9591	6	10
5305-00-024-0249	7	51	5961-00-424-9591	8	43
5305-00-024-0249	8	49	5961-00-424-9591	9	49
5305-00-024-0249	10	37	5961-00-424-9591	10	50
5305-00-024-0249	12	49	5961-00-424-9591	11	36
5305-00-024-0249	13	49	5961-00-424-9591	12	39
5305-00-024-0251	2	5	5961-00-424-9591	13	39
5305-00-024-0251	3	4	5905-00-437-1578	1	4
5305-00-024-0252	2	9	5905-00-437-1597	3	39
5305-00-024-0252	3	31	5962-00-442-2823	7	13
5305-00-024-0252	4	41	5962-00-442-2823	8	16
5305-00-024-0253	4	39	5962-00-442-2823	9	15
5305-00-024-0254	3	21	5962-00-442-2823	9	11
5305-00-024-0254	4	3	5940-00-451-6220	4	15
5941-00-027-0385	7	17	5940-00-451-6231	4	36
5910-00-029-3299	7	1	5940-00-451-6232	3	37
5305-00-029-3420	3	16	5905-00-454-4629	7	24
6145-00-061-1779	2	1	5910-00-465-0812	9	2
5905-00-061-0949	2	10	5910-00-461-0831	11	6
5905-00-076-6434	7	29	5970-00-470-3342	7	37
5340-00-079-2188	11	43	5962-00-471-2596	10	9
5340-00-079-2188	11	46	5962-00-471-2596	12	9
5905-00-106-1278	10	23	5962-00-471-2596	13	9
5940-00-156-7344	2	6	5915-00-473-3347	3	27
5310-00-167-1374	4	16	5915-00-473-3349	3	25
5935-00-168-4103	7	42	5915-00-473-3352	3	30
5910-00-176-7668	4	1	5915-00-473-3355	3	26
5906-00-185-6580	3	12	5950-00-476-4610	4	9
5905-00-185-8510	7	6	5950-00-476-4610	9	46
			5950-00-476-4611	8	38
5905-00-190-8883	3	29	5950-00-476-4615	10	1
5905-00-190-8887	4	18	5950-00-476-4622	4	35
5935-00-192-4789	8	17	5950-00-476-4623	4	34
5935-00-192-4789	12	19	5905-00-476-6228	7	21
5935-00-192-4789	13	19	5310-00-476-7586	8	58
5310-00-193-7577	7	36	5310-00-476-7586	8	54
5961-00-199-6008	7	16	5310-00-476-7586	12	54
5310-00-225-5328	4	25	5955-00-476-8029	13	36
5905-00-225-9393	10	15	5955-00-476-8029	13	36
5905-00-249-3661	3	2	5955-00-476-8030	12	37
5910-00-251-1446	8	6	5955-00-476-8033	10	31
5910-00-251-1446	12	2	5955-00-476-8034	10	30
5910-00-251-1446	13	2	5905-00-476-8052	8	25
5905-00-252-5425	7	26	5310-00-477-0312	8	57
5975-00-273-0788	4	44	5310-00-477-0312	8	53
5355-00-274-8335	4	37	5310-00-477-0312	12	53
5905-00-279-1724	12	14	5950-00-477-1012	13	10
5905-00-279-1724	13	14	5999-00-493-5536	4	10
5905-00-279-1877	7	2	5962-00-493-5968	7	60
			5962-00-493-5968	20	8
5905-00-279-1897	3	5	5962-00-493-5968	12	8
5905-00-279-2024	12	13	5935-00-552-7174	13	8
5905-00-279-2024	13	13	5920-00-556-0144	3	24
5905-00-279-2615	4	13	5961-00-577-6084	7	54
5905-00-279-2643	8	37	5961-00-577-6084	7	8
5905-00-279-3504	5	8	5961-00-577-6084	10	7
			5961-00-577-6084	11	9
5905-00-279-3514	3	22	5961-00-577-6084	12	7
5305-00-282-8524	7	31	5961-00-577-6084	13	7
5305-00-282-8524	8	40	5905-00-577-6767	11	14
5305-00-282-8524	9	47	5905-00-577-7704	10	12
5305-00-282-8524	10	32	5950-00-581-8881	3	38
5305-00-282-8524	10	34	5950-00-581-8881	4	7
5305-00-282-8524	10	36	5905-00-583-5130	10	22
5305-00-282-8524	10	61	5905-00-583-5130	4	19
5305-00-282-8524	10	61	5905-00-583-5130	12	19
5905-00-258-2046	5	1	5310-00-595-6211	13	35
5905-00-402-4228	4	27	5310-00-595-6211	3	6
5910-00-403-4420	8	13	5310-00-595-6211	4	52
			5310-00-595-6211	7	

STOCK NUMBER	FIG. NO.	ITEM NO.	STOCK NUMBER	FIG. NO.	ITEM NO.
5310-00-000-0211	8	48	5925-00-000-0070	8	53
5310-00-000-0211	9	58	5925-00-000-0070	9	59
5310-00-000-0211	10	38	5925-00-000-0070	10	41
5310-00-000-0211	11	44	5925-00-000-0070	11	42
5310-00-000-0211	12	58	5925-00-000-0070	12	44
5310-00-000-0211	13	50	5925-00-000-0070	13	44
5910-00-010-4051	5	2	5925-00-000-0094	9	26
5925-00-017-0730	11	11	5925-00-000-0094	11	27
5925-00-017-0730	12	31	5925-00-000-0096	11	32
5925-00-017-0730	13	31	5925-00-000-0096	10	24
5925-00-010-0819	11	13	5925-00-000-0096	12	33
5925-00-010-1028	4	40	5925-00-000-0096	13	33
5925-00-010-1013	4	2	5925-00-000-0097	9	24
5925-00-010-4381	4	28	5925-00-000-0097	10	27
5925-00-011-4442	6	8	5925-00-000-0097	11	20
5925-00-011-4442	8	16	5925-00-000-0098	9	42
5925-00-011-4442	9	35	5925-00-000-0098	10	25
5925-00-011-4442	11	31	5925-00-000-0098	11	29
5925-00-011-0818	8	31	5925-00-000-0098	12	21
5925-00-011-0818	9	35	5925-00-000-0098	13	21
5925-00-011-0818	10	10	5925-00-007-0002	9	29
5925-00-011-0818	11	16	5925-00-007-0002	10	17
5925-00-011-0818	12	17	5925-00-007-0002	12	28
5925-00-011-0818	13	17	5925-00-007-0002	13	28
5925-00-011-0821	8	28	5925-00-001-0195	8	25
5925-00-011-0820	9	27	5925-00-001-0195	9	23
5925-00-011-0820	11	25	5925-00-001-0195	11	23
5910-00-000-0600	12	1	5925-00-702-4438	12	18
5910-00-000-0600	13	1	5905-00-702-4439	13	18
5925-00-002-4037	10	28	5340-00-716-5497	5	3
5925-00-002-4038	8	29	5310-00-722-5998	2	6
5925-00-002-4038	9	21	5310-00-722-5998	3	7
5925-00-002-4038	10	13	5310-00-722-5998	4	4
5925-00-002-4038	12	25	6240-00-722-6467	9	14
5925-00-002-4038	13	25	5905-00-723-5251	9	39
5925-00-002-4100	9	32	5905-00-726-3807	10	21
5925-00-002-4100	8	21	5905-00-726-3807	11	21
5925-00-002-4103	12	15	5905-00-726-4413	10	20
5925-00-002-4103	13	15	5905-00-726-4413	11	15
5925-00-002-4104	7	19	5905-00-726-4413	12	30
5925-00-002-4108	8	23	5905-00-726-4413	13	30
5925-00-002-4109	7	28	5905-00-755-8389	8	34
5925-00-002-4109	9	22	5932-00-764-0692	9	16
6210-00-002-9033	9	54	5910-00-777-6903	9	5
5925-00-003-2236	9	43	5910-00-773-8404	9	3
5925-00-003-2240	11	31	5905-00-800-3478	11	32
5925-00-003-2240	9	19	5905-00-800-3481	11	25
5925-00-003-2241	9	26	5905-00-801-2377	9	41
5925-00-003-2241	12	26	5905-00-801-6998	6	7
5925-00-003-2241	13	26	5905-00-603-2908	12	27
5925-00-003-2243	8	30	5905-00-803-2908	13	27
5925-00-003-2245	8	27	5905-00-807-0059	12	23
5925-00-003-2246	9	33	5905-00-807-0059	13	23
5925-00-003-2246	11	24	6150-00-809-8126	4	42
5925-00-003-7721	8	33	5910-00-813-2443	4	39
5925-00-003-7721	9	44	5961-00-813-9360	7	15
5925-00-003-7721	11	22	5910-00-820-0209	4	11
5925-00-003-7721	12	24	5905-00-820-9124	7	29
5925-00-003-7721	13	24	5910-00-825-1637	5	7
5925-00-003-7723	7	23	5910-00-827-1206	10	4
5925-00-003-7723	9	20	5310-00-627-9286	4	32
5925-00-003-7723	10	16	5935-00-830-6348	3	1
5925-00-003-7723	11	33	5935-00-830-6349	4	14
5925-00-003-7723	12	32	5905-00-831-6134	7	27
5925-00-003-7723	13	32	5905-00-831-6134	9	19
5925-00-003-7724	9	34	5910-00-834-4900	6	2
5925-00-000-3122	9	37	5910-00-834-4900	7	3
5925-00-000-3388	9	40	5910-00-834-4900	8	8
5925-00-000-3388	11	17	5910-00-834-4900	9	1
5925-00-000-3389	7	18	5910-00-834-4900	11	5
5925-00-000-3370	9	28	5910-00-834-4900	12	4
5925-00-000-3370	12	22	5910-00-834-4900	13	4
5925-00-000-3370	13	22	5961-00-853-1079	8	19
5925-00-000-3370	7	22	5361-00-863-1079	9	18
5925-00-000-3370	11	18			
5925-00-000-3370	8	24			
5925-00-000-3370	7	46			

STOCK NUMBER	FIG. NO.	ITEM NO.	STOCK NUMBER	FIG. NO.	ITEM NO.
8001-00-000-0000	5	5	8110-00-000-0110	11	46
8001-00-000-0010	9	6	8110-00-000-0110	12	51
8001-00-000-0015	11	4	8110-00-000-0110	13	51
8001-00-000-0020	9	9	8110-00-000-0110	4	22
8001-00-000-0030	10	6	8110-00-000-0110	3	17
8001-00-000-0040	12	5	8110-00-000-0110	3	20
8001-00-000-0050	13	5	8110-00-000-0110	4	5
8001-00-000-0060	4	24	8110-00-000-0110	7	34
8001-00-000-0070	12	11	8110-00-000-0110	4	21
8001-00-000-0080	13	11	8110-00-000-0110	3	6
8001-00-000-0090	9	8	8110-00-000-0110	4	29
8001-00-000-0100	8	20	8110-00-000-0110	7	57
8001-00-000-0110	12	25	8110-00-000-0110	8	60
8001-00-000-0120	13	25	8110-00-000-0110	9	51
8001-00-000-0130	2	7	8110-00-000-0110	10	40
8001-00-000-0140	3	8	8110-00-000-0110	11	50
8001-00-000-0150	4	31	8110-00-000-0110	12	57
8001-00-000-0160	3	26	8110-00-000-0110	13	57
8001-00-000-0170	4	17	8001-00-000-3155	9	60
8001-00-000-0180	7	53	8001-00-000-3155	6	5
8001-00-000-0190	8	50	8001-00-000-3155	7	25
8001-00-000-0200	9	57	8001-00-000-3155	7	4
8001-00-000-0210	10	20	8001-00-000-3155	8	7

PART NUMBER	FIG. NO.	ITEM NO.	PART NUMBER	FIG. NO.	ITEM NO.	
80044	4	16	CS130225K	81340	12	5
80044	7	31	CS130225K	81340	13	5
80044	8	40	CS130225K	81340	9	5
80044	9	47	FACTORYSEL1	24361	8	9
80044	10	22	FACTORYSEL2	24361	8	10
80044	11	34	FACTORYSEL3	24361	8	11
80044	12	61	FACTORYSEL4	24361	8	12
80044	13	61		81340	7	54
80044	7	55	HB	80223	3	38
80044	8	47	HB	80223	4	7
80044	9	64	JJ089	81340	8	17
80044	10	26	JJ089	81340	12	10
80044	11	40	JJ089	81340	13	10
80044	12	52		95146	4	37
80044	13	52	MC1709CG	04713	7	13
80044	7	57	MC1709CG	04713	8	16
80044	8	60	MC1709CG	04713	9	15
80044	9	51	MC1709CG	04713	11	11
80044	10	49	MC817P	04713	10	8
80044	11	50	MC817P	04713	12	8
80044	12	57	MC817P	04713	13	8
80044	13	57	MC876P	04713	10	6
71279	5	4	MC876P	04713	12	9
71279	7	58	MC876P	04713	13	9
71279	8	44	MS15795-803	96906	3	35
71279	9	50	MS15795-803	96906	4	6
71279	10	48	MS15795-803	96906	7	52
71279	11	37	MS15795-803	96906	8	48
71279	12	56	MS15795-803	96906	9	56
71279	13	55	MS15795-803	96906	10	38
57771	10	53	MS15795-803	96906	11	44
57771	12	40	MS15795-803	96906	12	60
57771	13	40	MS15795-803	96906	13	50
80223	4	10	MS15795-805	96906	2	6
02760	9	16	MS15795-805	96906	3	7
71890	7	1	MS15795-805	96906	4	4
46304	3	11	MS15795-807	96906	4	24
81340	6	4	MS15795-841	96906	4	25
81340	6	3	MS25100-23	96906	4	40
81340	9	12	MS25237-327T	96906	7	11
81340	7	6	MS25256-40	96906	7	49
51340	11	3	MS25256-6	96906	9	54
81340	A	14	MS3258-23	96906	4	2
81340	11	7	MS35233-15	96906	7	51
81340	8	4	MS35233-15	96906	8	49
81340	7	5	MS35233-15	96906	9	55
81340	9	2	MS35233-15	96906	10	37
81340	5	7	MS35233-15	96906	11	43
81340	9	3	MS35233-15	96906	12	49
81340	10	6	MS35233-15	96906	13	49

PART NUMBER	FIG. NO.	ITEM NO.	PART NUMBER	FIG. NO.	ITEM NO.
RC07GF101J	8	33	RC07GF220J	8	34
RC07GF101J	9	44	RC07GF221J	9	31
RC07GF101J	11	22	RC07GF221J	11	19
RC07GF101J	12	24	RC07GF222J	9	39
RC07GF101J	13	24	RC07GF223J	9	29
RC07GF102J	6	8	RC07GF223J	10	17
RC07GF102J	8	36	RC07GF223J	12	26
RC07GF102J	9	36	RC07GF223J	13	26
RC07GF122J	11	31	RC07GF223J	10	19
RC07GF122J	9	38	RC07GF241J	8	23
RC07GF122J	11	27	RC07GF242J	9	34
RC07GF123J	10	20	RC07GF272J	7	22
RC07GF123J	11	15	RC07GF272J	11	18
RC07GF123J	12	30	RC07GF273J	8	24
RC07GF123J	13	30	RC07GF301J	9	37
RC07GF133J	12	18	RC07GF302J	10	28
RC07GF133J	13	18	RC07GF303J	12	27
RC07GF151J	8	39	RC07GF303J	13	27
RC07GF152J	7	23	RC07GF331J	7	18
RC07GF152J	9	20	RC07GF332J	9	27
RC07GF152J	10	16	RC07GF332J	11	29
RC07GF152J	11	33	RC07GF350J	7	29
RC07GF152J	12	32	RC07GF391J	9	40
RC07GF152J	13	32	RC07GF392J	8	29
RC07GF153J	8	31	RC07GF392J	9	21
RC07GF153J	9	35	RC07GF392J	10	13
RC07GF153J	10	18	RC07GF392J	12	25
RC07GF153J	11	16	RC07GF392J	13	25
RC07GF153J	12	17	RC07GF433J	12	23
RC07GF153J	13	17	RC07GF433J	13	23
RC07GF154J	11	30	RC07GF472J	9	42
RC07GF155J	11	25	RC07GF472J	10	26
RC07GF202J	9	28	RC07GF472J	11	29
RC07GF202J	12	22	RC07GF472J	12	21
RC07GF202J	13	22	RC07GF472J	13	21
RC07GF203J	9	40	RC07GF473J	8	27
RC07GF203J	11	17	RC07GF473J	9	30
			RC07GF473J	11	24
			RC07GF512J	9	26
			RC07GF512J	12	26
			RC07GF512J	13	26
			RC07GF513J	8	21
			RC07GF513J	12	15
			RC07GF561J	13	15
			RC07GF561J	7	28
			RC07GF561J	9	22
			RC07GF562J	9	26
			RC07GF562J	9	23
			RC07GF562J	11	23
			RC07GF621J	6	7
			RC07GF622J	9	32
			RC07GF623J	7	19
			RC07GF652J	9	24
			RC07GF682J	10	27
			RC07GF682J	11	20
			RC07GF683J	8	35
			RC07GF683J	10	25
			RC07GF750J	9	41
			RC07GF753J	9	32
			RC07GF821J	11	32
			RC07GF821J	10	24
			RC07GF821J	12	33
			RC07GF821J	13	33
			RC07GF822J	7	27
			RC07GF822J	9	19
			RC07GF824J	8	28
			RC07GF912J	10	21
			RC07GF912J	11	21
			RC07SELECTED	12	16
			RC07SELECTED	13	16
			RC20GF472J	5	6
			RC20GF621J	5	5
			RC32GF101J	8	37

PART NUMBER	FSCN	FIG. NO.	ITEM NO.	PART NUMBER	FSCN	FIG. NO.	ITEM NO.
RC32GF151J	81349	12	14	MMFIS33	14655	9	10
RC32GF151J	81349	13	14	MMF1S47	14655	8	2
RC32GF152J	81349	5	1	M101PSSR	18415	9	45
				M101PSSR	18415	10	29
RC42GF301J	81349	12	13	25U	72982	8	13
RC42GF301J	81349	13	13	25U	72982	9	11
RC42GF510J	81349	7	25	0029	87471	9	65
RM55C2000F	81349	7	25	1N270	99180	8	5
RM55C2700F	81349	7	24	1N270	99180	9	3
81349	81349	10	15	1N270	99180	11	10
RYSLAYSBI02A	81349	10	11	1N270	99180	12	6
RYSLAYSBI02A	81349	12	31	1N270	99180	13	5
RYSLAYSBI02A	81349	13	31				
RYSLAYSBI04A	81349	11	13				
RYSLAYSBI04A	81349	8	25	IN3822A	81349	7	10
RYSLAYSBI04A	81349	11	14	IN4002	80131	7	7
RYSLAYSBI04A	81349	10	12	IN545	81349	7	8
RYSLAYSBI04A	81349	10	22	IN545	81349	10	7
RYSLAYSBI04A	81349	12	19	IN545	81349	11	9
RYSLAYSBI04A	81349	13	19	IN545	81349	12	7
SKT10BLACK	98291	7	48	IN545	81349	13	7
SKT10BLACK	98291	8	56	IN750A	03877	7	9
SKT10BLACK	98291	9	63	10305	07047	9	69
SKT10BLACK	98291	10	44	10029	07047	7	61
SKT10BLACK	98291	12	48	10029	07047	8	42
SKT10BLACK	98291	13	48	10029	07047	12	58
SKT10GRN	98291	7	42	10029	07047	13	58
SKT10ORANGE	98291	7	47	10043	07047	7	69
SKT10ORANGE	98291	8	54	10043	07047	8	61
SKT10ORANGE	98291	9	60	10043	07047	11	53
SKT10ORANGE	98291	10	40	10171	07047	6	10
SKT10ORANGE	98291	11	47	10171	07047	8	43
SKT10ORANGE	98291	12	45	10171	07047	9	49
SKT10ORANGE	98291	13	45	10171	07047	10	50
SKT10RED	98291	7	45	10171	07047	11	36
SKT10RED	98291	8	53	10171	07047	12	39
SKT10RED	98291	9	59	10171	07047	13	39
SKT10RED	98291	10	41	11028402	24361	3	1
SKT10RED	98291	11	42	11028403-1	24361	3	27
SKT10RED	98291	12	44	11028403-2	24361	3	25
SKT10RED	98291	13	44	11028404	24361	4	9
SKT10VIOLET	98291	7	41	11028404	24361	9	46
SKT10WHITE	98291	7	44	11028405-1	24361	3	30
SKT10YELLOW	98291	7	46	11028405-2	24361	3	26
SKT10YELLOW	98291	8	55	11028405	24361	8	38
SKT10YELLOW	98291	9	61	11038413-2	23050	7	37
SKT10YELLOW	98291	10	45	118P20592S4	56289	5	2
SKT10YELLOW	98291	11	48	1231-1	71279	11	46
SKT10YELLOW	98291	12	46	1231-2	71279	7	50
SKT10YELLOW	98291	13	46	1231-2	71279	8	51
SRSP1	58289	4	44	1231-2	71279	9	62
SS7	88730	3	14	1231-2	71279	10	42
TE1123	58289	11	6	1231-2	71279	12	47
TE1149	58289	10	4	1247-9	71279	13	47
TE1155	58289	6	2	143-022-01	71279	6	9
TE1155	58289	7	3	1601841-1	02660	3	24
TE1155	58289	8	8	16028421	24361	7	33
TE1155	58289	9	1	16028421	24361	8	57
TE1155	58289	11	5	16028421	24361	12	53
TE1155	58289	12	4	16028422	24361	13	53
TE1155	58289	13	4	16028422	24361	8	58
TE1157-1	58289	6	1	16028422	24361	12	54
TE1157-1	58289	9	7	16028422	24361	13	54
TE1157-1	58289	10	3	1714	24361	4	27
TE1162	58289	9	9	1715	44655	4	26
TE1200	58289	9	6	17406	44655	4	26
TE1200	58289	11	4		70903	4	42
TE1207	58289	7	2				
TE1508-1	58289	10	1	2N1304	81349	12	11
TE154CC	70309	4	12	2N1304	81349	13	11
TS101P01	81349	4	18	2N1305	81349	8	19
TYPET	27735	9	4	2N1305	81349	9	18
TYPET	27735	10	2	2N1613	81349	7	15
T1002	81640	7	30	2N3055	81349	7	16
T154CCCC	70309	4	11	2N3439	81349	8	20
UP3TO38	98078	4	60	2N760A	81349	6	5
14655	14655	8	1	2N760A	81349	8	18
14655	14655	11	2	2N760A	81349	9	17
14655	14655	9	8	2N760A	81349	10	10
14655	14655	8	3	2N760A	81349	11	12

NATIONAL STOCK NUMBER AND PART NUMBER INDEX

PART NUMBER	FIG. NO.	ITEM NO.	PART NUMBER	FIG. NO.	ITEM NO.
28700A	81349	12	344	24485	9
28700A	81349	13	380238707SAC2A	96589	4
31021070	24361	3	399313F	70354	4
3102107	24361	2	399422K	70354	4
3102108	24361	3	41023101	24361	3
3102108	24361	2	41023103	24361	3
31023110	24361	7	41023119	24361	4
31023110	24361	8	41026202	24361	1
31023110	24361	9	41026204	24361	3
31023110	24361	10	8835-0007870-10M	72982	12
31023110	24361	11	8835-0007870-10M	72982	13
31023110	24361	12	599-2001-2	75382	4
31023110	24361	13	599-2004-20	75382	3
31023112-1	24361	3	6135550632	68340	3
31023112-2	24361	3	6135550632	68340	7
31023114	24361	9	6135550632	68340	8
31023114	24361	10	6135550632	68340	9
31023123	24361	4	6135550632	68340	10
31023123	24361	3	6135550632	68340	11
31023123	24361	11	6135550632	68340	12
31023123	24361	7	6135550632	68340	13
31023123	24361	4	6271CS0632	68340	7
31023127	24361	3	6271CS0632	68340	8
31023127	24361	9	6271CS0632	68340	9
31023127	24361	12	6271CS0632	68340	10
31023127	24361	13	6271CS0632	68340	11
31023127	24361	15	6271CS0632	68340	12
31023127	24361	7	6271CS0632	68340	13
31023127	24361	7	6271CS0632	68340	3
31023127	24361	4	72A021617STCP	78277	4
31023127	24361	4	75NCFMA2-62	72982	4
31023127	24361	11	75NCFMA2-62	72982	2
31023127	24361	10	75NCFMA2-62	72982	3
31023127	24361	12	75NCFMA2-62	72982	4
31023127	24361	13	79NTK40	72982	7
31023127	24361	8	79NTK40	72982	8
31023127	24361	9	79NTK40	72982	9
31023127	24361	7	79NTK40	72982	10
31023127	24361	2	79NTK40	72982	11
31023127	24361	3	79NTK40	72982	12
31023127	24361	3	79NTK40	72982	13
31023127	24361	1	8000A67	91506	16
31023127	24361	1	8000A67	91506	12
31023127	24361	1	8000A67	91506	13
31023127	24361	1	801-000X5F0-102K	72982	8
31023127	24361	1	801-000X5F0-102K	72982	12
31023127	24361	1	801-000X5F0-102K	72982	13
31023127	24361	1	805-000X5V0-103Z	72982	8
31023127	24361	1	805-000X5V0-103Z	72982	10
31023127	24361	1	805-000X5V0-103Z	72982	11
31023127	24361	12	805-000X5V0-103Z	72982	12
31023127	24361	12	805-000X5V0-103Z	72982	13
31023127	24361	13	811-000Z5U0-103M	72982	7
31023127	24361	13	811-000Z5U0-103M	72982	7
31023127	24361	10	9222N115	68340	7
31023127	24361	10	9537CA0632-1	68340	5
31023127	24361	8	979-555	35673	2
31023127	24361	12	979-555	35673	3
31023127	24361	13	995-2A3864	44655	7

LATEST NATIONAL STOCK NUMBER ASSIGNMENTS

STOCK NUMBER	FIG. NO.	ITEM NO.	STOCK NUMBER	FIG. NO.	ITEM NO.
9005-00-027-9238	7	43	5935-00-081-4578	12	48
9005-00-027-9238	8	62	5935-00-081-4578	13	48
9005-00-027-9238	9	58	5905-00-104-8369	8	32
9005-00-027-9238	10	43	5905-00-104-8369	9	30
9005-00-027-9238	11	41	5905-00-104-8369	10	14
9005-00-027-9238	12	43	5905-00-104-8369	12	29
9005-00-027-9238	13	43	5905-00-104-8369	13	29
9005-00-027-9238	9	55	5905-00-106-3666	6	6
9005-00-027-9238	4	23	5905-00-106-3666	8	22
9005-00-027-9238	7	48	5905-00-106-3666	9	25
9005-00-027-9238	8	56	5905-00-106-3666	11	26
9005-00-027-9238	9	63	5905-00-106-3666	12	20
9005-00-027-9238	10	44	5905-00-106-3666	13	20

LATEST NATIONAL STOCK NUMBER ASSIGNMENTS - Continued

STOCK NUMBER	FIG. NO.	ITEM NO.	STOCK NUMBER	FIG. NO.	ITEM NO.
5905-00-119-3225	8	35	5935-00-683-7648	11	47
5905-00-119-3225	10	25	5935-00-683-7648	12	45
5905-00-141-1225	10	19	5935-00-683-7648	13	45
5910-00-431-8182	11	7	5935-00-683-7649	7	46
5905-00-443-2224	3	19	5935-00-683-7649	8	25
5905-00-443-2224	7	40	5835-00-683-7649	9	61
5905-00-443-2224	8	45	5935-00-683-7649	10	45
5905-00-443-2224	9	53	5935-00-683-7649	11	48
5905-00-443-2224	10	35	5935-00-683-7649	12	45
5905-00-443-2224	11	39	5935-00-683-7649	13	45
5905-00-443-2224	12	42	5910-00-717-0767	8	4
5905-00-443-2224	13	42	5935-00-829-3154	7	41
5910-00-431-8182	11	1	5910-00-835-2718	6	3
5905-00-476-8231	13	36	5910-00-835-2722	9	10
5905-00-476-8232	13	37	5910-00-835-2725	8	2
5920-00-477-0420	2	4	5910-00-835-2734	8	1
5920-00-477-0420	3	3	5910-00-835-2734	11	2
5905-00-482-6194	13	59	5905-00-837-7837	4	25
5945-00-542-7022	4	8	5961-00-580-4783	7	7
5961-00-526-2291	8	15	5961-00-892-3351	7	9
5961-00-526-2291	9	13	5910-00-941-7903	6	1
5961-00-526-2291	11	10	5910-00-941-7903	9	7
5961-00-526-2291	12	6	5910-00-941-7903	10	3
5961-00-526-2291	13	6	5961-00-984-3156	8	18
5905-00-617-6837	7	44	5961-00-984-3156	9	17
5905-00-642-9195	7	30	5961-00-984-3156	10	10
5905-00-683-7648	7	47	5961-00-984-3156	11	12
5905-00-683-7648	8	54	5961-00-984-3156	12	12
5905-00-683-7648	9	60	5961-00-984-3156	13	12
5905-00-683-7648	10	40			

LATEST PART NUMBER ASSIGNMENTS

PART NUMBER	FSCN	FIG. NO.	ITEM NO.	PART NUMBER	FSCN	FIG. NO.	ITEM NO.
RCR07G103JS	81349	6	6	RCR07G362JS	81349	13	29
RCR07G103JS	81349	8	22	30050SG015C82	80183	11	1
RCR07G103JS	81349	9	25	69023BROWN	28499	7	43
RCR07G103JS	81349	11	26	69023BROWN	28499	8	52
RCR07G103JS	81349	12	20	69023BROWN	28499	9	58
RCR07G103JS	81349	13	20	69023BROWN	28499	10	43
RCR07G362JS	81349	8	32	69023BROWN	28499	11	41
RCR07G362JS	81349	9	30	69023BROWN	28499	12	43
RCR07G362JS	81349	10	14	69023BROWN	28499	13	43
RCR07G362JS	81349	12	29				

ADDITIONAL LATEST NATIONAL STOCK NUMBER ASSIGNMENTS

STOCK NUMBER	FIG. NO.	ITEM NO.
5905-00-104-6358	12	34
5905-00-104-6358	13	34
5905-00-106-1246	7	17
5961-00-643-3177	4	20
5961-00-643-3177	5	6
5961-00-655-1551	7	34
5910-00-902-5877	8	5
5910-00-902-5877	10	5
5910-00-902-5877	11	8
5910-00-902-5877	12	3
5910-00-902-5877	13	3
5340-00-929-9224	6	9
5999-00-945-3392	7	59
5999-00-945-3392	8	61
5999-00-945-3392	11	53

ADDITIONAL LATEST PART NUMBER ASSIGNMENTS

PART NUMBER	FSCN	FIG. NO.	ITEM NO.
JAN1N2986B	81349	4	20
JAN12986B	81349	5	6
JAN2N1132	81349	7	34
RCR07G882JS	81349	12	34
RCR07G882JS	81349	13	34
RCR07G152JS	81349	7	17

RECOMMENDED CHANGES TO EQUIPMENT TECHNICAL MANUALS



SOMETHING WRONG WITH THIS MANUAL?

THEN... JOT DOWN THE DOPE ABOUT IT ON THIS FORM, TEAR IT OUT, FOLD IT AND DROP IT IN THE MAIL!

FROM (YOUR UNIT'S COMPLETE ADDRESS)

Commander
Stateside Army Depot
ATTN: AMSTA-US
Stateside, N.J. 07703

DATE 10 July 1975

PUBLICATION NUMBER

TM 11-5840-340-12

DATE

23 Jan 74

TITLE

Radar Set AN/SPS-76

BE EXACT... PIN-POINT WHERE IT IS

PAGE NO.	PARA-GRAPH	FIGURE NO.	TABLE NO.
2-25	2-28		
3-10	3-3		3-1
5-6	5-8		
		F03	

IN THIS SPACE TELL WHAT IS WRONG AND WHAT SHOULD BE DONE ABOUT IT:

Recommend that the installation antenna alignment procedure be changed through to specify a 2° IFF antenna lag rather than 1°.

REASON: Experience has shown that with only a 1° lag, the antenna servo system is too sensitive to wind gusting in excess of 20 knots, and has a tendency to rapidly accelerate and decelerate as it hunts, causing strain to the drive train. Hunting is minimized by adjusting the lag to 2° without degradation of operation.

Item 5, Function column. Change "2 db" to "3db."

REASON: The adjustment procedure for the TRANS POWER FAULT indicator calls for a 3 db (500 watts) adjustment to light the TRANS POWER FAULT indicator.

Add new step f.1 to read, "Replace cover plate removed in step e.1, above."

REASON: To replace the cover plate.

Zone C 3. On J1-2, change "+24 VDC to "+5 VDC."

REASON: This is the output line of the 5 VDC power supply. + 24 VDC is the input voltage.

TEAR ALONG DOTTED LINE

TYPED NAME, GRADE OR TITLE, AND TELEPHONE NUMBER

SSG I. M. DeSpirito 999-1776

SIGN HERE:

SSG I. M. DeSpirito

DA FORM 2028-2 (TEST) AUG 73

P.S.—IF YOUR OUTFIT WANTS TO KNOW ABOUT YOUR MANUAL "FIELD" MAKE A CARBON COPY OF THIS AND GIVE IT TO YOUR HEADQUARTERS.

HISA 1686-75

RECOMMENDED CHANGES TO EQUIPMENT TECHNICAL MANUALS

SOMETHING WRONG WITH THE MANUAL?



THEN... JOT DOWN THE DOPE ABOUT IT ON THIS FORM, TEAR IT OUT, FOLD IT AND DROP IT IN THE MAIL!

FROM: (YOUR UNIT'S COMPLETE ADDRESS)

DATE

PUBLICATION NUMBER

DATE

TITLE

BE EXACT... PIN-POINT WHERE IT IS

IN THIS SPACE TELL WHAT IS WRONG AND WHAT SHOULD BE DONE ABOUT IT.

PAGE NO.

PARA-GRAPH

FIGURE NO.

TABLE NO.

TEAR ALONG DOTTED LINE

TYPED NAME, GRADE OR TITLE, AND TELEPHONE NUMBER

SIGN HERE:

FILL IN YOUR
UNIT'S ADDRESS

FOLD BACK

DEPARTMENT OF THE ARMY

OFFICIAL BUSINESS
PENALTY FOR PRIVATE USE, \$300

POSTAGE AND FEES PAID
DEPARTMENT OF THE ARMY
500-414



Commander
US Army Electronics Command
ATTN: DRSEL-MA-Q
Fort Monmouth, New Jersey 07703

FOLD BACK

TEAR ALONG DOTTED LINE

REVERSE OF DA FORM 702LJ (TEST)

By Order of the Secretary of the Army:

BERNARD W. ROGERS
General, United States Army
Chief of Staff

Official:

PAUL T. SMITH
Major General, United States Army
The Adjutant General

Distribution:

Active Army

TSG (1)
USAAREND (1)
USASA (2)
TRADOC (2)
DARCOM (1)
TECOM (2)
OS Maj Comd (2)
HISA (Pt Monmouth) (22)
Armies (1)
USACC (2)
USACC-CONUS (2)
USACC-EUR (2)
USACC-PAC (2)
USACC-A (2)
USASIGS (10)
Fort Huachuca (95)
Fort Carson (5)
Fort Gillem (1)
Ft. Richardson (ECOM) (1)

WSMR (1)
Svc Colleges (1)
USAERDAA (1)
USAERDAW (1)
Army Dep (1) except
LEAD (10)
SAAD (20)
TOAD (14)
SHAD (2)
USA Dep (1)
Sig Sec USA Dep (2)
Sig Dep (2)
Sig FLDMS (1)
Units org under fol TOE: (1 cy each)
11-97
11-98
11-117
11-202
11-500 (AA-AC)
29-134
29-136

NG: None

USAR: None

For explanation of abbreviations used, see AR 310-50.

DEPARTMENT OF THE ARMY
US ARMY AG PUBLICATIONS CENTER
1425 WOODSON ROAD
ST. LOUIS, MISSOURI 63114

OFFICIAL BUSINESS
PENALTY FOR PRIVATE USE \$300

POSTAGE AND FEES PAID
DEPARTMENT OF THE ARMY
DDP 314

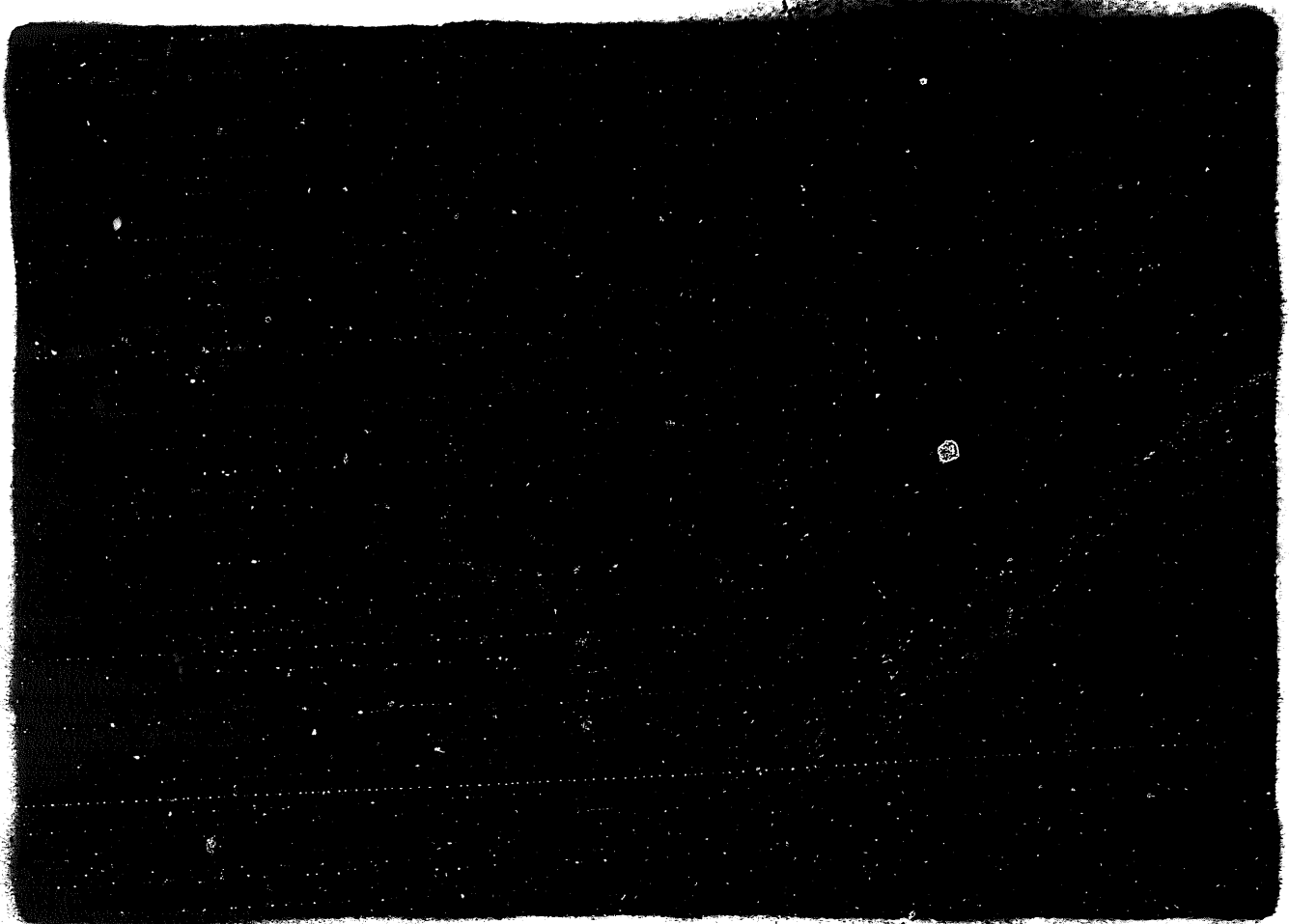


END

02-05-83

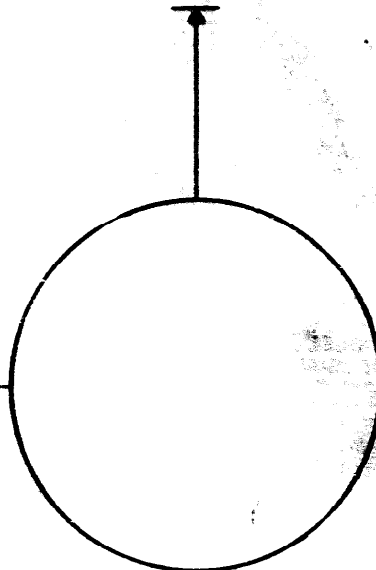
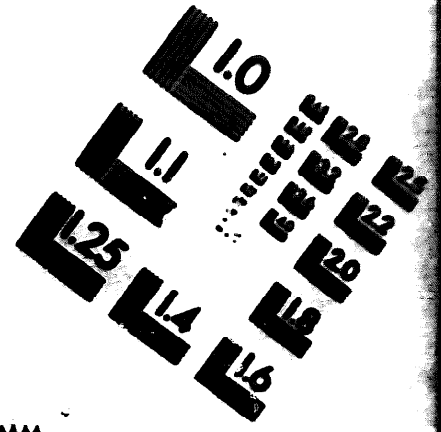
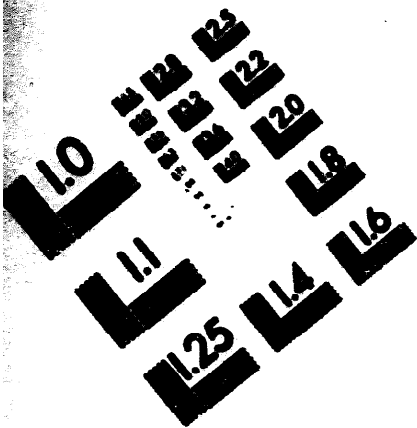
DATE





DEPARTMENT OF THE ARMY

MICROFORM TEST TARGET



150 MM

1.0 mm (ø = .01 mm)

ABCDEFGHIJKLMN OPQRSTUVWXYZ 1234567890
abcdefghijklmnopqrstuvwxyz %&'()*+,-./:;<=>?@

1.5 mm (ø = 1.00 mm)

ABCDEFGHIJKLMN OPQRSTUVWXYZ 1234567890
abcdefghijklmnopqrstuvwxyz %&'()*+,-./:;<=>?@

2.0 mm (ø = 1.37 mm)

ABCDEFGHIJKLMN OPQRSTUVWXYZ
abcdefghijklmnopqrstuvwxyz
1234567890 %&'()*+,-./:;<=>?@

2.5 mm (ø = 1.77 mm)

ABCDEFGHIJKLMN OPQRSTUVWXYZ
abcdefghijklmnopqrstuvwxyz
1234567890 %&'()*+,-./:;<=>?@

1.0 mm (ø = .01 mm)

ABCDEFGHIJKLMN OPQRSTUVWXYZ 1234567890
abcdefghijklmnopqrstuvwxyz %&'()*+,-./:;<=>?@

1.5 mm (ø = 1.00 mm)

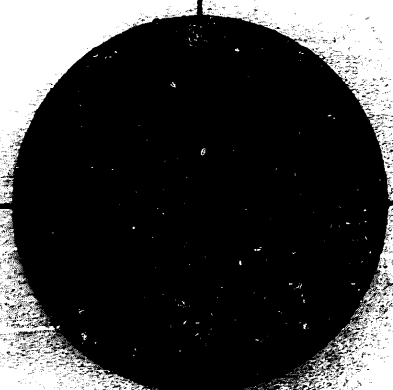
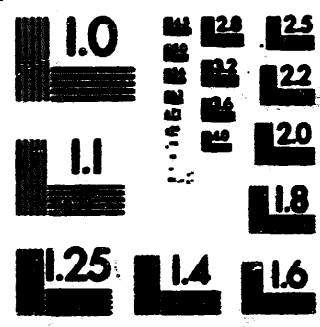
ABCDEFGHIJKLMN OPQRSTUVWXYZ 1234567890
abcdefghijklmnopqrstuvwxyz %&'()*+,-./:;<=>?@

2.0 mm (ø = 1.37 mm)

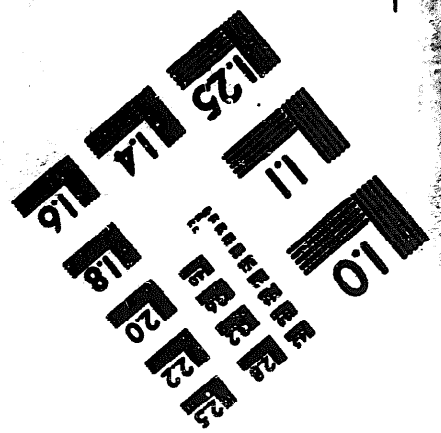
ABCDEFGHIJKLMN OPQRSTUVWXYZ
abcdefghijklmnopqrstuvwxyz
1234567890 %&'()*+,-./:;<=>?@

2.5 mm (ø = 1.77 mm)

ABCDEFGHIJKLMN OPQRSTUVWXYZ
abcdefghijklmnopqrstuvwxyz
1234567890 %&'()*+,-./:;<=>?@



200 MM



250 MM